

BARRIERS TO GENE FLOW  
IN NATURAL POPULATIONS OF GRASSHOPPERS  
II. MAINTENANCE OF NARROW HYBRID-ZONES  
BETWEEN MORPHS OF *ARPHIA CONSPERSA*  
ON BLACK MESA, COLORADO<sup>1</sup>

BY ROBERT B. WILLEY AND RUTH L. WILLEY<sup>2</sup>

In the previous publication of this series (Willey and Willey, 1967), we described the zoogeography of *Arphia conspersa* on the two sides of the Black Canyon of the Gunnison River in southwestern Colorado. North of the canyon the populations are monochromatic for red-orange wing color and south of the canyon the populations show a steep cline from west to east culminating in nearly 100% yellow-winged demes even though they often are less than one aerial mile from the orange-winged populations on the North Rim. We concluded that the sides of the canyon were an effective barrier to gene flow between the two rim populations and that the sedentary behavior and social cohesiveness of the adults (Willey and Willey, 1967 and 1969) probably slowed down lateral gene diffusion between the nearly adjacent demes of the South Rim.

We have completed a preliminary survey of a narrow hybrid-zone on Black Mesa, an adjacent area which we previously have discussed briefly (Willey and Willey, 1967). The barriers seem to be related to suitable habitat and, in this case, we hope to show that the mixed demes are subject to periodic extermination, and perhaps are maintained as a hybrid-zone by reinvasion from the neighboring monochromatic populations.

METHODS

The census method is that of Willey and Willey (1967). Briefly, we walked in a non-repeating spatial pattern through the habitat and scored each insect as it flew up as either orange or yellow. An effort was made to count 100 individuals in each contiguous deme (200 preferably), but counts as low as 10 are reported in the protocol (Fig. 1 and 2). Nearly all the populations on the mesa were censused at least once during the six years of study; several were censused as many as ten times. If we felt the population could withstand

---

<sup>1</sup>Research was based at the Rocky Mountain Biological Laboratory, Crested Butte, Colorado; and X Lazy F Ranch, Crawford, Colorado.

<sup>2</sup>Address of the co-authors: Department of Biological Sciences, University of Illinois at Chicago Circle, Chicago 60680.

*Manuscript received by the editor January 18, 1972*

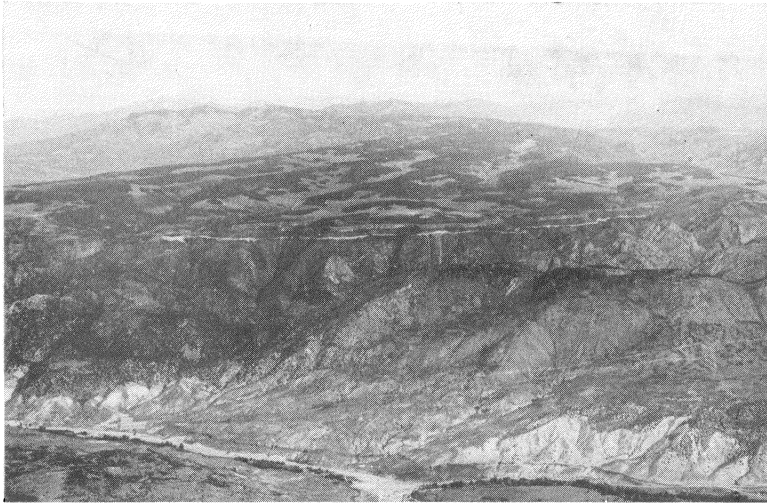


PLATE 1. Oblique aerial view of Black Mesa from 30 miles south and 13,000 ft elevation, 15 September 1970. Route 92 (white line) marks the south edge of the mesa-top. Black Canyon is hidden behind Cimarron Hill and Fitzpatrick Mesa.

the predation, we sampled it, capturing 50 individuals in a random manner for more careful analysis and as specimens for future reference. A mark-recapture program on two adjacent zoogeographically strategic populations served as a check on census results and for analysis of individual movements during the adult period of the life cycle (Willey *et al.*, in preparation). In 1970, total capture, character scoring and release were instituted, because of the low population level in that year. The following United States Geological Survey 7-1/2-minute Topographic maps were used for the survey, plates and figure-codes: Big Soap Park, Cathedral Peak, Cimarron, Crawford, Curecanti Needle, Little Soap Park, Sapinero, and X Lazy F Ranch, extending from  $107^{\circ}37'30''$  West and  $38^{\circ}37'30''$  North to  $107^{\circ}15'$  West Longitude and  $38^{\circ}22'30''$  North Latitude.

#### OBSERVATIONS

*Black Mesa.* This mesa is a well-defined plateau capped by volcanic rocks, principally andesitic breccias and rhyolitic welded tuffs of Oligocene age (Hansen, 1971, and pers. comm.). It slopes upward from 9,000 ft on the southern rim to over 11,000 ft at the north-eastern end. Its southern rim forms part of the North Rim of the

Black Canyon of the Gunnison River. This area is approximately 35 square miles and the mesa top stands 1000 to 2000 ft above the surrounding valleys. Intermittent streams dissect the surface into four major north-south gulches draining into the Gunnison River and a major gulch drains each of the east and west sides of the mesa (Plates 1 and 2). Private ranches make up about 10% of the area; 10% is the Black Mesa Experimental Forest and Range, administered jointly by the United States Forest Service and Colorado State University at Fort Collins; the rest is in the Gunnison National Forest.

According to William Knott, a lifelong resident and forest ranger, the phytotopography of the mesa has not changed since settlement in 1880, except that the common dandelion (*Taraxacum officinale*) was not present until 1920. Boundaries of grasslands and forested tracts are largely unchanged, except for the results of the Indian Wars in 1870-80 during which several extensive forest tracts were burned by the Indians as a "scorched earth" policy. These burned areas and a few aspen groves with burned or sawed spruce stumps are easily distinguished from the virgin forests. The Indians used the mesa primarily as a hunting ground during the summer and several localities have numerous artifacts scattered over the surface as evidence of repeated summer encampments.

Although the United States Geological Survey Topographic Maps were made from aerial photographs taken in 1955, the boundaries of chaparral, forest, and grasslands are accurate to minute detail even at the time of this writing (1971). The only changes are a small acreage of timber sales, construction of the Morrow Point and Blue Mesa Dams and Reservoirs within the Black Canyon itself, and the clearing for high tension power lines across the southwest corner of the Mesa.

The major forest component is Engelmann spruce (*Picea engelmanni*), alpine fir (*Abies lasiocarpa*) and quaking aspen (*Populus tremuloides*) in mixed or monotypic stands (Tietjen *et al.*, 1967). Upland meadows, which are the primary habitats for *Arphia*, contain the bunch grasses *Festuca thurberi*, *F. idahoensis* and *Stipa lettermani* plus the forbs *Geranium fremontii*, *Chrysopsis villosa*, *Erigeron macranthus*, *Lathyrus leucanthus*, *Agoseris* spp. and the shrubs *Chrysothamnus parryi* and *Potentilla fruticosa* as the dominant plants in terms of herbage production (Paulsen, 1969). As can be seen from the map (Plate 2), the grasslands follow the drainages and were probably maintained as grasslands by the activities of the once

numerous beaver. The forests form a barrier between each drainage. There are many upland meadows surrounded by forest forming a natural system of isolated habitats for grassland-dependent animal species such as *Arphia conspersa*. Below 9300 ft elevation, we have determined that sage brush (*Artemisia tridentata*) becomes a dominant shrub and mixed with oak brush (*Quercus gambellii*), serviceberry (*Amelanchier pumila*), mountain mahogany (*Cercocarpus montanus*) and chokecherry (*Prunus melanocarpa*) form a dense chaparral on the edges and slopes around the mesa.

The climate is subalpine with heavy and continuous snow cover 5 to 6 ft deep, usually from November through April (William Knott, weather station records and personal communication). Annual precipitation is quite variable;  $\bar{X}$  from 1956 to 1971 is 29.7 inches (S.D. = 6.6), two-thirds falling as snow. The snow pack is variable in length;  $\bar{X}$  from 1956 to 1971 is 203 days (S.D. = 17.5). Insolation is high during May, June, and July with our Belfort pyrliograph reading as high as 1.6 cal/cm<sup>2</sup>/min. Air temperatures during the summer months range from freezing at night to 25°C during the day. The area is subject to unseasonal snowstorms, periods of heavy rainfall and alternating saturated and dried-out soil. For example, on 26 June 1969, there was a wet snowfall of 6 to 12 inches. On 12 October 1969, a wet snowfall of 24 inches followed a week of heavy rains which saturated the soil. This snowfall formed the basis for a continuous dense snowpack above the 9000 ft level until 15 May 1970. This early and continuous snowpack (216 days), just within one standard deviation, and long water saturation of the soil was unique in the memory of William Knott, whose family has kept precipitation and temperature records on the mesa since 1905. The snow pack of 1970-71 was equally long, but started as a dry, cold snowfall. Again on 12 June 1970, there was a snowfall of 14 inches, which melted within a couple days. However, the snowpack records of the climatological station show that these last two winters were not the longest packs on record; that of 1956-57 lasted 247 days until 17 June and was equivalent to 30 inches of liquid water on 12 April. That year also was the wettest on record since 1905, 48 inches of precipitation (William Knott, personal communication). The effect on *Arphia* populations is unknown, since we began our studies in 1964. The vagaries of climatic conditions of this high plateau may be an important factor in the maintenance of steep polymorph clines in the *A. conspersa* populations.

*Arphia conspersa*. For a full discussion of the life history and behavior of this oedipodine species, refer to our previous papers (Willey and Willey, 1967 and 1969). The species is spring-brooded with the nymphs (hoppers) overwintering during the third or fourth instar. The populations seem to be formed of loosely interacting social colonies which tends to reduce vagility. Their habitat preference seems to be a short narrow-leaved grassland with enough bare ground for courtship. Their altitudinal limit depends on slope and exposure and not yet understood limiting factors, but is between 9700-10,300 ft at the latitude of Black Mesa ( $38^{\circ}30' \pm 7'30''$  N.). The species is seldom found in dense tall-grass meadow, thick aspen or spruce-fir forest, dense chaparral or in irrigated pastures. Nor is it likely to be found on extensive bare rock or freshly disturbed areas. It seems to prefer seral edges and, despite its apparent lack of vagility, seems to be an opportunistic species, often appearing in regrown road cuts and chained (cleared) chaparral/grasslands within 5 years if established adjacent populations are available (Locality #60b, from Buckhorn Gulch #51a). However, Alexander and Hilliard (1969) list this species as a non-advective species, seldom occurring in zones where it is not resident as nymphs, e.g., alpine zones and the timberline ecotone.

*Zoogeography*. Plate 3 shows the location and graphed wing-color proportions of each major deme on and adjacent to Black Mesa. Figure 1 is the protocol of each deme. We must emphasize that the proportions refer only to phenotypes, since the genetic analysis is still under investigation. Nevertheless, it is striking that phenotype proportions are quite similar within a gulch and may differ by 25% from the adjacent gulch. From the west, the only possible path of invasion to the mesa top is along the slopes of Long Gulch on the southwest or up Crystal Creek on the northwest. The nearest nearly 100% orange-winged population is #52(a) [Fig. 2] which is separated from the nearest Long Gulch demes (60% orange-winged) by a virgin spruce-fir forest only one-half mile thick. Northward, the nearest Crystal Creek deme is #25 on the 9200 ft contour. The passage onto Black Mesa rises to 10,500 on Powell Ridge and is, from all appearances, a suitable meadow and cut-over forest habitat, but presently that area is uninhabited by *Arphia*.

Between Long Gulch and Mesa Creek are thin strips of aspen-spruce forest (some of which were lumbered 30-40 years ago) and very dense growths of *Festuca thurberi*. This latter is such a sufficient barrier that demes #53a (the Mounds) and #53b (the Forks) maintain proportions of 35-40% yellow and 60-75% yellow re-

spectively, even though they are only one-half mile apart. These demes were intensively studied during 1968-71 by mark-recapture methods (Willey *et al.*, in preparation) and no interchange was noted nor were any individuals found in the interspace. This patchiness of habitat utilization is characteristic of the Black Mesa demes. Figure 1 is an accurate appraisal of the number of demes we were able to find on Black Mesa during eight years of study. From Mesa Creek eastward, a slight drop in average proportions is seen in Corral Gulch and then a sudden drop to 1%-4% in Myers Gulch. This phenotypic cline is two miles wide and there are several grassland corridors between the gulches through which gene flow could be accomplished.

We have analyzed by census, line transect, and sampling those demes and subdemes which occur in the trans-mesa corridors. These are best exemplified by #54a, and b in one series (Experimental Pastures #5 and 6) and #54c, 54d, and 55a (the Transect). It is noteworthy that the corridor demes are, among themselves, a cohesive unit and, instead of showing a gradual cline from low yellow in the west to high yellow in the east, the break is between the easternmost corridor demes and the adjacent Myers Gulch deme. This may be the result of a zone of uninhabited grassland on the western portion of Myers Gulch, and the only demes we have found in the gulch are those shown in Plate 3 on the eastern side (#45c, 55b, 64a, and 64b).

Several peculiar relationships are indicated by Figs. 1 and 2. Although the major demes seem relatively stable in wing-color proportions, the smaller subdemes of the trans-mesa corridors differ in proportions from one census to another. For example, Pasture 6 (#54b) varied from 9% to 34% orange over three years. There is no pattern in this variation, and the total numbers are nearly the same for each census. There is no geographic pattern (geographic subdeme records are in Fig. 2), nor is there a pattern of morning and afternoon differences in the censuses. On 29 June 1968, a morning census showed a concentration of six orange males in one area of #54b. These males could not be found on 1 July. The evidence suggests a transitory clustering of orange individuals in small areas which could skew censuses drastically if a group is missed, or if there is a single case of differential predation. However, a mapping program on the "Mounds" (#53a) disclosed no difference in the dispersion pattern of distribution among any of the phenotypic classes (Willey *et al.*, in preparation).

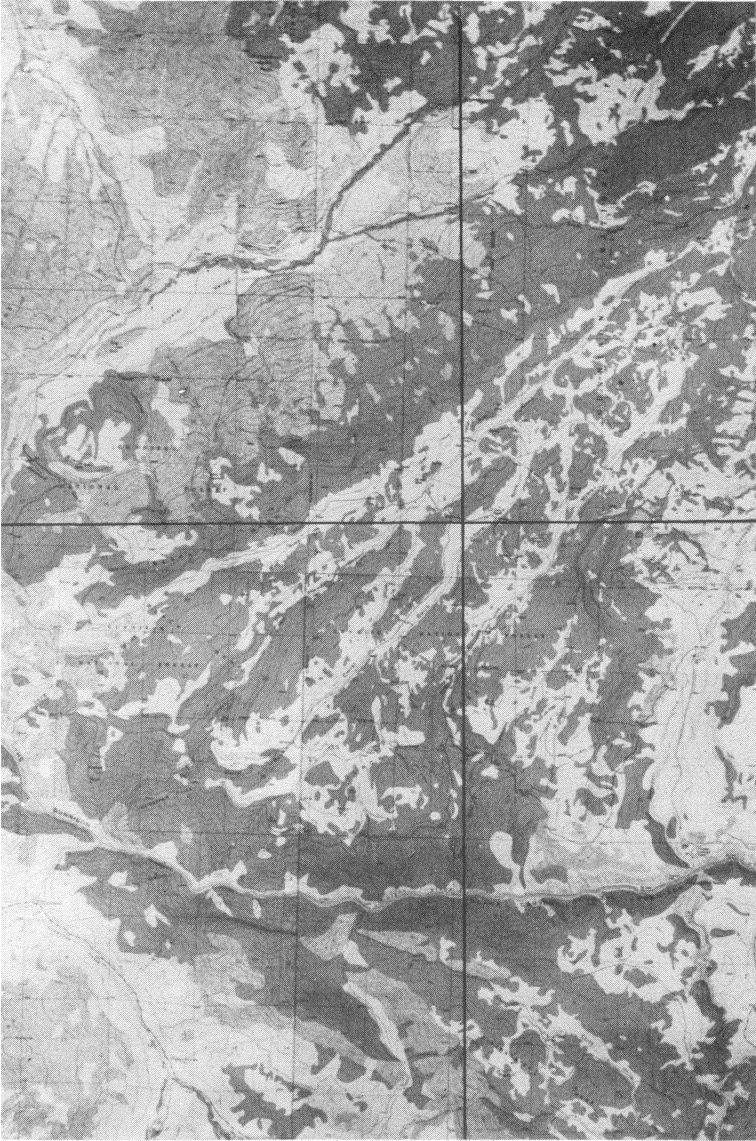


PLATE 2. Collage of U. S. Geological Survey 7 1/2 Minute Topographic Maps (Cathedral Peak, Cimarron, Curecanti Needle and X Lazy F Ranch), showing Black Mesa and environs. Compare with Pl. 3 on the facing page to see the relationships between *A. conspersa* deme structure and phytopography.

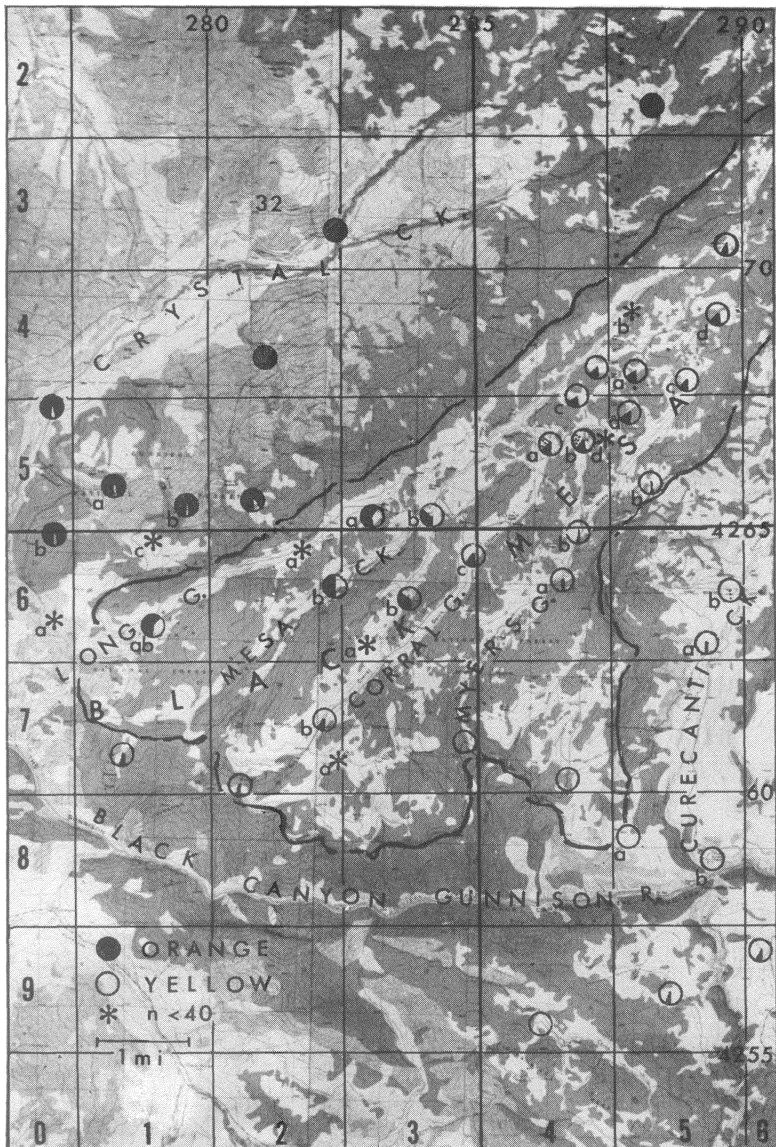


PLATE 3. Same collage as in Pl. 2 showing most of the censused localities and their relative proportions. For explanation see text, page 348.



The "Transect" (#44a, 54c, 55a) also exhibits this clustering phenomenon. In this case, we were able to map the orange-winged clusters in 1968 and again in 1969. They were present in the same positions both years. We then ran two transects, each 1 mile long, through the area (Hill, 1969, unpublished data) to ascertain any dispersion from these clusters. None seemed to occur. Uniformly, the clusters of orange-winged insects occurred on mounded elevations of pasture with *Festuca thurberi* providing slightly greater cover than in the areas more densely populated with yellow-winged individuals. These results indicated three possible causes: 1) the orange-winged phenotype has some pleimorphic preference for denser habitat, 2) there is a low vagility of individuals during the entire life span and they seldom wander far from the original hatching point, or 3) the phenotypes have reached some level of behavioral or ecological separation. We currently are investigating the clustering patterns of these populations.

It is clear that the only invasion route for yellow-winged phenotypes is from southern Curecanti Canyon and from the slopes of the South Rim of the mesa via the major gulches. All other avenues are blocked by the forest. We should emphasize the habitat type, the size, and the elevation of the northernmost demes on the mesa. Number 45b is a tiny deme of 8 to 20 individuals which survives around an old sawdust pile—all that remains of a lumber mill. A few more individuals can be found in an adjacent burned-over and logged area, but this area is primarily an early sere characterized by broad-leaved plants, brambles, and few grasses. Number 35 is slightly larger and has several small subdemes. The deme inhabits a cleared private pasture at 10,300 ft, which enjoys a southeastern exposure. The floral phenology is similar to that of areas 500 ft lower. The "Burn Area" contains large subdemes (#45d) which have colonized an extensive burned-over area. After 85 years, this soil still can support only scattered bushes (*Ribes lacustre* and *Sambucus sp.*) and small, sparse patches of *Festuca idahoensis*, *F. thurberi*, *Stipa columbiana*, *S. lettermani* and *Blepharoneuron tricholepis*, which provide good though discontinuous habitat for *A. conspersa*. However, the floral phenology is much delayed over that in other habitats and indicates continuous snow cover until 15 May or later. Demes in higher altitudes farther north have been indicated in some years by sighting one or two males, a female, or hearing some crepitations. Whether these are founding colonies which succeed only for a year or two is not known. In two of these cases they were found in old

lumber mill sites near sawdust heaps and in one case the male was found in an old homestead foundation.

In 1970, populations over the entire mesa above 9200 ft crashed. In most areas, no *Arphia* could be found. In demes #53a, b and 54a, between 8 and 41 individuals were found in a total capture survey, about 1 to 15 percent of the expected population level. Of these, nearly one-half had blebs on the pronotum, an anomaly found in only 2% of normal populations. Lower altitude populations were very nearly normal in density and high counts were made of #50, 51a, 82 and the North Rim of the Black Canyon National Monument (over 600), all occurring between 7700 and 9100 ft elevation. Similar crashes in usually dense populations occurred 40 miles north at Gothic (9500 ft, Gunnison County), and Jack's Cabin Cut-Off (9000 ft, Gunnison County). On the other hand, we have noted and collected sufficient nymphs of *A. conspersa* (over 200 in several areas) in August and September, 1970, to convince us that the diapausing eggs of the 1969 adult brood were not adversely affected by the winter and hatched normally in the summer of 1970.

In 1971, the populations were normal in abundance, though not as high in number as those of 1969. The mark-recapture program on the Mounds (#53a) showed a population of 400, whereas in 1970 only 15 adults were found. In September, 1971, only one nymph was found in this area, two nymphs in the Burn Area (#45d, 100 nymphs in 1970), and 16 nymphs in Pasture 5 (#54a, 41 adults in 1970, over 200 adults in 1971). This small number of nymphs in 1971 indicates no recovery of the 1970 brood.

#### DISCUSSION

Black Mesa is subject to severe vagaries of weather. Since the snow packs of 1969-70 and 1970-71 were nearly the same length (216 and 215 days respectively), and the 1971 adult brood was only a little below normal in density, we think that conditions before the snowpack of 1969-70 or after it had melted probably caused the population crash of 1970. These conditions could have been 1) the snowfall of 26 June 1969, which may have killed hatching nymphs; 2) the wet snowfall and rains of early October, 1969, which could have harmed cold-immobilized nymphs; 3) the snowfall of 12 June 1970, which could have killed emerging adults, and 4) an undetected late freeze which could have decimated freeze-sensitive nymphs emerging from hibernation in May. The fact that half of the surviving adults had developmental anomalies, especially blebs on the pronotum, indicates some sort of post-dormancy damage. However, the

specific causes for the widespread failure of the 1970 adult brood are still uncertain and probably were cumulative. In a simpler case, Ehrlich *et al.* (1972) have noted a similar series of extinctions of the butterfly *Glaucopsyche lygdamus* at these altitudes in this same general area which they prove was due to destruction of oviposition sites and larval food plants by the snowfall of 26 June 1969.

Consequences of the failure of the 1970 *A. conspersa* brood are the problem of subsequent recruitment and the entire question of the maintenance of the Black Mesa hybrid zone. It will be very instructive to follow the reestablishment of the *Arphia* demes from the few surviving centers of the 1970 brood, from the off-mesa populations, and perhaps from the odd-year brood. Certain proportion discrepancies, such as those shown by #53b (the Forks), #72b (Corral Gulch), and #45d(c) (southeast meadow of the Burn Area) seem related to alternate years. Since we have proved in the present results that the Black Mesa populations overwinter as egg and nymphs, there may be two genetically independent populations, one reaching adulthood on even-numbered years and one on odd years. However, further yearly censusing of strategic populations is necessary to determine the validity of this assumption and to determine the amount of temporal crossing-over by any non-diapausing individuals.

The narrowness of the Black Mesa hybrid-zone has puzzled us, but now it seems clear that periodic extermination of the mesa-top populations could afford a considerable setback to any extensive gene flow. Indeed, the presently inhabited portion of the mesa probably has been colonized by *A. conspersa* only within the past 150 years since the beginning of the last climatic warming trend after the Neoglaciation (Remington, 1968, p. 350; and Richmond, 1965) which probably had made most of the mesa-top uninhabitable. Any long term cooling trend resulting in increased precipitation, numbers of late frosts or snows, etc., could again cause the mesa to become an altitudinal barrier. It is also probable that the 1970 population crash is not a unique occurrence on the mesa, even during this present hypsothermal period.

If the present zoogeographic pattern of wing-color variation is the result of recent colonization, it is probably safe to assume that the connecting corridors and forest barriers are at least as old and we can describe original invasion patterns in terms of the present topography. However, with current pressures on the National Forest Service to release tracts for lumbering, the original proportions of vegetational associations, the climatic patterns and even the water-holding capacity

of the mesa will be changed. It is well to have a baseline for evaluating the changes which will occur in the zoogeography of this zone of hybridization. It should be instructive to examine this area soon for evidence of other species- and morph-pairs in the process of hybridization, since climatic conditions and geography at present seem ideal for the development of a common "suture-zone" between species-pairs of diverse organisms (Remington, 1968), especially between those which are spring-brooded, ground-inhabiting poikilotherms.

#### CONCLUSIONS

On Black Mesa, Colorado, the grasshopper *Arphia conspersa* exhibits a phenotypic cline in wing-color variation which separates 100% orange-red demes from 100% yellow demes by two to five miles. The cline seems to be maintained by three factors at least: 1) limited vagility of the individuals in a deme, 2) unsuitable habitat between the geographically discontinuous populations, and 3) periodic, virtually complete, exterminations of the hybrid demes by climatological catastrophes related to the fact that the mesa-top is at the altitudinal limit for the species.

#### SUMMARY

*Arphia conspersa* varies in wing color on Black Mesa in southwestern Colorado. The phenotypes exhibit an orderly but steep step-wise cline from 100% orange and red to 100% yellow over a distance of only two to five miles, ascertained by sight-census and mark-recapture methods over a period of eight years. Black Mesa slopes gradually from 9000 ft elevation in the south to 11,000 ft in the north. Since *A. conspersa* has successfully colonized only a few areas above 10,000 ft, this also affords an opportunity to observe the ecology of a species at its altitudinal limit.

In 1970, 50 demes which had been located on the mesa were virtually exterminated, probably by unseasonal weather conditions prior to and after a prolonged winter snow pack lasting more than 8 months. However, these high-altitude populations have a two-year life cycle with both eggs and nymphs overwintering. The alternate-year brood, which had over-wintered eggs in 1969-70, was unaffected and matured normally in 1971. Census of nymphs in the fall of 1971 indicated no recovery of the nearly exterminated brood. This catastrophe strongly suggests that maintenance of this narrow hybrid-zone depends not only on the barriers produced by unsuitable habitat, but also on periodic extermination of the mixed populations. It also indicates the survival value of a two-year life cycle at the altitudinal limits of a species.

FIGURE 1. Protocol of wing-color proportions of demes on Black Mesa and vicinity.

Code <sup>4</sup>	Locality Designation and Coordinates <sup>5</sup>	Elevation <sup>6</sup>	Sample size (n) = # orange	Percent orange (n) = Sample < 100	Date
20.	275E4277N Gould Reservoir	7700	60(60)	(100)	8 VI 67
25.	289E4273N Crystal/East Crystal Ck.	9000-9200	94(94)	(100)	18 VI 68
28.	297E4273N Little Soap Park — South End	8000	166(0)	0	6 VII 64
32.	282.5E4271N Crystal/Dyer Ck.	8200	245(245)	100	18 VI 68
35.	290E4270N Mesa Ck. Road/Private Rd.*	10,100-200	32(2)	(6)	12 VII 69
			44(5)	(11)	23 VII 69
37.	293.5E4271N Curecanti Ck./Commissary G.	8700	119(0)	0	18 VI 67
40.	276E4268N Pine Ridge	8200-8400	125(125) <sup>†</sup>	<100	27 VI 66
42.	280.5E4268N NFS Boundary/NFS Trail 716*	8240	108(108)	100 <sup>8</sup>	25 VI 64
			46(46)	(100)	15 VI 68
			<10 1969		
44.	287E4268N Mesa Creek Burn Area	9900	69(8)	(12)	25 VII 69
45a.	288E4268N Transsect, N. Isolated Meadow*	9950	88(16)	(18)	8 VII 68
45b.	288E4269N Sawmill at Mesa Ck.	9960	9(3)	(33)	2 VII 66
45c.	289E4268-69N Head of Myers Gulch at Cattle Pond	9970	12(2)	(17)	27 VI 67
			105(13)	12	27 VI 67
45d.	289-90E4269-79N Burn Area, Myers Gulch**	10,100	293(41)	14	14 VII 68
			256(42)	16	15 VII 68
49.	298E4269N Soap Ck. Campground	7740	445(52)	12	11 VII 69
			79(3)	(4)	6 VII 64
			41(0)	(0)	17 VII 67
50.	277E4267.5N Crystal Ck./Rt. 92 Both sides road West of Creek	7800-8000	135(132)	98	14 VI 68
			88(86)	(98)	18 VI 70

Code <sup>4</sup>	Locality Designation and Coordinates <sup>5</sup>	Elevation <sup>6</sup>	Sample size (n) = # orange	Percent orange (n) = Sample < 100	Date
51a.	278E4266N Buckhorn Gulch — Flat Iron Trail	8200-8400	146(141) 101(99) 116(109)	97 98 94	7 VII 65 27 VI 66 18 VI 70
51b.	279.5E265.5N	8800	82(80)	(98)	18 VI 68
52.	280-81E4265-66N	8800-9800	101(93)	92	23-24 VI 68
53a.	283E4265N Long Gulch "Mounds" Total Marked/Recaptured Once	9800	146(84) 142(74)	58 52	29 VI 67 VI-VII 68
	Total Marked		759(452)	60	VI-VIII 69
	Total Marked		23(9)	(39)	VI-VII 70
	Total Marked		429(268)	61	VI-VIII 71
53b.	284E4265.5N Mesa Ck./NFS Trail 716** ("The Forks") Total Marked/Recaptured Once	9640	126(35) 63(20)	28 (32)	29 VI 64 2 VII 67 VI-VII 68
	Census (AM-noon)		178(55)	31	22 VII 69
	Census (PM)		82(33)	(44)	23 VII 69
54a.	296.5E4266.5N Pasture 5 — Census Total Capture/Release	9800	62(27) 106(15) 41(17)	(44) 14 (41)	28 VI 67 1 VII 70
	Total Capture/Release		199(54)	27	30 VI 71
	Total Capture/Release		82(17)	(21)	27 VII 71
54b.	287E4267N Pasture 6* (AM) (PM)	9800	73(7) 68(23)	(10) (34)	29 VI 67 29 VI 68
	Noon		135(22)	16	1 VII 68
	Noon-South		62(14) 94(18)	(23) (19)	8 VII 69 16 VII 69
54c.-55a.	Transect area 287-88E4267-68N Stakes 1-58, N & S average of 7 runs (Courtesy of W. Hill)	9800-9900	452(60)	13	27 VI to 1 VIII 69

Code <sup>4</sup>	Locality Designation and Coordinates <sup>5</sup>	Elevation <sup>6</sup>	Sample size (n) = # orange <10 1968, 1969	Percent orange (n) = Sample < 100	Date
54d.	297.5E4267N Pasture 6 (Myers Gulch)		19(2) <10	(11)	28 VI 67
55a.	288E4267N Transsect Central-East Area* (PM)	9880-9900	206(33)	16	7 VII 68
	(AM) (PM)		342(61)	18	8 VII 68
	(Noon-PM)		183(32)	17	8 VIII 69
55b.	288.5E4266N Curecanti Rim*	6700	119(5)	4	29 VI 67
60a.	277E4263N Quarry on Rt. 92	8700	20(17)	(85)	18 VI 70
60b.	277E4265N Buckhorn Gulch— Chained Chaparral				
61a.	279-80E4263-65N Long Gulch Transsect	8200-8500	104(101)	97	18 VI 68
61b.	279E4264N Long Gulch Cliffs/NFS Trail 719*	9200-9800	292(171)	59	17-24 VI 68
		9600	15(8)	(53)	25 VI 64
			22(11)	(50)	15 VI 68
			105(58)	55	18 VI 68
61c.	279E4265N Knoll, head Buckhorn G.	9300	17(15)	(88)	15 VI 68
62a.	281.5E4264.5N Head of Long Gulch at Lumber Road	9700	27(14)	(52)	30 VI 68
62b.	282E4264N Mesa Ck. Gulch, 1 mile SW "Forks" Quadrat	9400			
	(PM)		49(30)	(61)	2 VII 68
	(AM)		64(27)	(42)	4 VII 68
	(PM)		54(31)	(57)	5 VII 68
63a.	283E4263N T 49N, R 6W, S 24 Cattle Pond	9550	27(10)	(37)	2 VII 68
63b.	283E4264N Lava outcrop*	9600	181(61)	34	26 VI 67
63c.	285E4264N Corral Gulch, S. X Lazy F Ranch*	9600	110(21)	19	25 VI 67
			242(48)	20	3 VI 69
64a.	286.5E4264N Myers Gulch/Knott Ranch Rd.**	9500	127(+)	3	27 VI 67

Code <sup>4</sup>	Locality Designation and Coordinates <sup>5</sup>	Elevation <sup>6</sup>	Sample size (n) = # orange	Percent orange (n) = Sample < 100	Date
64b.	287E4265N Myers Gulch Gauging Stn.*	9560	107 (4)	4	29 VI 64
65a.	290E4263N Curecanti Ck./Rt. 92	8000	55 (4)	(7)	3 VII 68
65b.	290E4264N Curecanti Ck. at NFS Boundary	8087	58 (1)	(2)	28 VI 64
71.	278E5260N Morrow Point	9900	336 (1)	< 1	18 VI 67
72a.	282.5E4260.5N McLeod Ranch-Triangle	9400	43 (2)	(5)	14 VI 68
72b.	282E4262N Corral Gulch/NFS Boundary	9400	18 (1)	(6)	30 VI 68
			27 (4)	(15)	5 VII 66
			46 (3)	(7)	24 VI 67
			19 (3)	(16)	21 VI 68
			75 (10)	(13)	2 VII 68
73.	285E4261N Myers Gulch/Rt. 92	8800	61 (0)	(0)	17 VI 68
74.	287E4260.5N Pagone's Ranch	9000-9200	19 (0)	(0)	14 VI 68
79.	298E4262N Sapinero Guard Stn.	7770-7900	129 (0)	0	20 VI 68
			231 (63)	27	27 VI 65
			53 (12)	(23)	23 VI 70
82.	281E4260N Corral Gulch/Rt. 92	8900-9000	157 (5)	3	16 VI 68
85a.	288E4259N Curecanti Point*	8600	103 (5)	5	18 VI 70
85b.	290E4259N Pioneer Lookout	8033	154 (0)	0	16 VI 68
			18 (0)	(0)	29 VI 66
			128 (0)	0	5 VI 67
86.	292.5E4259N Haypress Gulch/Rt. 92	7800	71 (4)	(6)	28 VI 64
88a.	296.5E4259N Blue Mesa Dam, North	7200-7300	37 (4)	(11)	11 VI 67
			72 (10)	(14)	15 VI 67
88b.	296.5E4258N Blue Mesa Dam, South	7200-7600	119 (54)	45	11-15 VI 67
89.	299E4260N Old Sapinero/Rt. 50 (Extinct)	7250	139 (118)	85	27 VI 65
94.	286E4256N W. Fitzpatrick Mesa	9100	123 (0)	0	2 VII 66
95.	289E4257N E. Fitzpatrick Mesa	8400	49 (3)	(6)	2 VII 66
96.	290.5E4256N Blue Mesa Summit	8200	159 (14)	9	27 VI 65



FIGURE 2. Protocol of subdemes of complex areas on Black Mesa.

Code <sup>4</sup>	Locality of Subdemes and Coordinates <sup>5</sup>	Elevation <sup>6</sup>	Sample size (n) = # orange	Percent orange (n) = Sample < 100	Date	
45d.	Myers Gulch Burn Area	10,100	55(10)	(18)	14 VII 68	
	(a) 289E4269N		65(11)	(17)	14 VII 68	
	Area 1		107(24)	22	11 VII 69	
(b)	289.5E4269N	10,100	<10		1970	
			Area 2 — AM	96(10)	(10)	14 VII 68
			Late PM	47(3)	(6)	14 VII 68
			AM	42(3)	(7)	15 VII 68
			Noon	90(14)	(16)	15 VII 68
(c)	290E4269N	10,000	190(24)	13	11 VII 69	
			AM	75(5)	(7)	11 VII 69
			AM	97(8)	(8)	11 VII 69
			PM	77(10)	(13)	14 VII 68
52.	Meek Reservoir to Ridge	8800	114(25)	22	15 VII 68	
			(a) 280E4266N	76(2)	(3)	11 VII 68
			(b) 280E4266N	20(19)	(95)	23 VI 68
54c.	287E4267.5N	9880	50(44)	(88)	23 VI 68	
			(b) 280-81E4265-66N	31(30)	(97)	24 VI 68
			(c) 281E4265N	119(38)	32	26 VI 67
			Top of S. clearing	141(31)	22	9 VII 68
55a.	287E4267.5N	9880	201(35)	17	9 VII 68	
			(a) 287E4267.5N	201(35)	17	9 VII 68
			Transect	115(17)	15	7 VII 68
55a.	281.5E4267.5N	9900	49(12)	(24)	8 VII 68	
			(a) 281.5E4267.5N	60(10)	(17)	8 VII 68
			Central Sector	60(10)	(17)	8 VII 68

Code <sup>4</sup>	Locality of Subdemes and Coordinates <sup>5</sup>	Elevation <sup>6</sup>	Sample size (n) = # orange	Percent orange (n) = Sample < 100	Date
61a.	(b) 288E4267N	9900	58 (8)	(14)	7 VII 68
	NE Sector		33 (8)	(24)	7 VII 68
	AM N & S side		57 (6)	(11)	8 VII 68
	PM towards Center		236 (43)	18	8 VII 68
	North Side		9 (1)	(11)	8 VII 69
61a.	Noon-PM S. alcove		15 (3)	(20)	8 VII 69
	Noon-PM toward Center		99 (18)	(18)	8 VII 69
	Long Gulch Transect				
	(a) 279E4263N	9200-9600	24 (15)	(63)	19 VI 68
	(b) 279E4263N	9200	18 (10)	(56)	17 VI 68
88b.	(c) 279E4264N	9800	41 (29)	(71)	24 VI 68
	(d) 280E4264N	9600	105 (58)	55	18 VI 68
	(e) 280E4265N	9600	104 (60)	58	19 VI 68
	Blue Mesa Dam South				
	(a) 296.5E4258N	7200	68 (44)	(65)	11 VI 67
(b)	7600	51 (10)	(20)	15 VI 67	

<sup>4</sup>The numbering of these localities coincides with the mercator grid on the map (Plate 2), coded so that the first digit corresponds to the ordinate and the second to the abscissa.

<sup>5</sup>The coordinates are in units of the Universal Transverse Mercator grid, zone 13, to the nearest half-kilometer from the U. S. Geological Survey topographic maps listed in Methods (p. 331).

<sup>6</sup>The elevation has been estimated from the U. S. Geological Survey topographic maps listed in Methods (p. 331).

<sup>7</sup>This population contained some dilute orange individuals and may have had yellow phenotypes which were not observed.

<sup>8</sup>Corrected from Protocol Fig. 2, Entry #31, Willey and Willey (1967).

\*Area censused in 1970, but total sighting < 10.

\*\*Area recensused > 2 times, never more than 5 sightings.

## ACKNOWLEDGEMENTS

We acknowledge the help of our assistants, undergraduate research participants and volunteers in censusing: David Ballestas, David Borg, William Davis, Sharon Ginsburg, Anne Hill, Dennis Johns, James Karpus, Gordon and Muriel Kerr, Ellen Levy, Jaclin Lewbin, David Messenger, David Mucha, Gerald Mussnug, Marianne Niedzlek, Ronald Outen, Frances Pivorunas, Joyce Redemsky (Mrs. Gregg Young), Wayne Schennum, Melvin Shemluck, Frank Slansky, Darelyn Weber (Mrs. Charles Handley), and David Werner. We thank Dr. Wallace Hansen, U.S. Geological Survey, Denver, for critically reading the manuscript; and Dr. Paul Ehrlich, Stanford University, for giving us a copy of the manuscript of Ehrlich *et al.* (1972). William Knott, Forestry Research Technician, Black Mesa Experimental Forest, has been most informative in the history, floristics, and climatology of Black Mesa. Dr. Raymond Price, former Director of the Rock Mountain Range Experiment Stations, allowed us to study populations in the experimental pastures and sent us reprints of their studies of the Black Mesa. We are grateful for the hospitality of George Klaitch, Manager of the X Lazy F Ranch, and the Colorado Synod of the Presbyterian Church for allowing us living and laboratory space at the ranch. The Forest Service land-use maps (T50N-R5-5-1/2W, T49N-R5-5-1/2W, and T49N-R6W), showing recent and projected timber sales, were supplied by R. M. Case, District Ranger. David Mucha's photographic assistance on Plates 2 and 3 is gratefully received. Mrs. Mary Grant retyped several revisions of this paper.

This study was partially supported by Grant GB-2201 from the National Science Foundation, four grants from the University of Illinois Graduate Research Board, two grants from the Society of the Sigma Xi (1963 and 1968), National Science Foundation Pre-doctoral Fellowships to Wayne Schennum, and to James Karpus, and National Science Foundation Undergraduate Research Participation fellowships to William Davis, Sharon Ginsburg, William Hill, Gerald Mussnug, Marianne Niedzlek, Ronald Outen, Melvin Shemluck and Joseph Wroblewski.

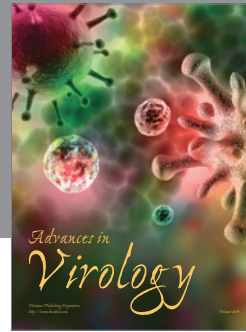
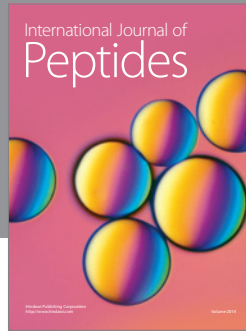
## EXPLANATION OF PLATES 2 &amp; 3

Plates 2 and 3 are quadrated by the Universal Transverse Mercator Grid (Zone 13) and in Pl. 3 every linear 2.5 km is numbered on the ordinate and the abscissa. The combined number (ordinate and abscissa respectively) produces the code number of each quadrat and its demes (Figs. 1 and 2). The lower case letters distinguish demes within a single quadrat. If a deme occurs on a grid line, the locality is numbered according to the code number

of the quadrat to the south or west of the line (see quad. No. 32). Mercator lines 285 km East and 4265 km North are printed also on Pl. 2. The U.S. Geological Topographic Maps were drawn from aerial photographs taken between 3 September and 27 September 1955. The light colored areas are grassland, grey is chaparral and dark is forest.

## LITERATURE CITED

- ALEXANDER, G. AND J. R. HILLIARD, JR.  
1969. Altitudinal and seasonal distribution of Orthoptera in the Rocky Mountains of Northern Colorado. *Ecol. Monogr.*, 39: 385-431.
- EHRlich, P. R., D. E. BREEDLOVE, P. F. BRUSSARD, AND M. A. SHARP  
1972. Weather and the "regulation" of subalpine populations. *Ecology*, 53(1): in press.
- HANSEN, W. R.  
1971. Geologic map of the Black Canyon of the Gunnison River and vicinity, Western Colorado. U.S. Geol. Survey, Misc. Geol. Invest.: Map 1-584.
- PAULSEN, H. A., JR.  
1969. Forage values on a mountain grassland-aspen range in western Colorado. *J. Range Management*, 22: 102-107.
- REMINGTON, C. L.  
1968. Suture-zones of hybrid interaction between recently joined biotas. *Evol. Biol.* 2: 321-428.
- RICHMOND, G. M.  
1965. Glaciation of the Rocky Mountains. In Wright, H. E. and D. G. Frey (Editors), *The Quaternary of the United States* (Princeton, New Jersey: Princeton University Press, pp. 217-230).
- TIETJEN, H. P., C. H. HALVORSON, P. L. HEGDAL AND A. M. JOHNSON  
1967. 2, 4-D herbicide, vegetation, and pocket gopher relationships — Black Mesa, Colorado. *Ecology*, 48: 634-643.
- WILLEY, R. B. AND R. L. WILLEY  
1967. Barriers to gene flow in natural populations of grasshoppers. I. The Black Canyon of the Gunnison River and *Arphia conspersa*. *Psyche*, 74: 42-57.  
1969. Visual and acoustical social displays by the grasshopper *Arphia conspersa* (Orthoptera: Acrididae). *Psyche*, 76: 280-305.
- WILLEY, R. B., G. MUSSGNUG, J. WROBLEWSKY AND P. WUSSOW  
A study of the movement within a population of *Arphia conspersa* (Orthoptera: Acrididae). *In Preparation*.



**Hindawi**

Submit your manuscripts at  
<http://www.hindawi.com>

