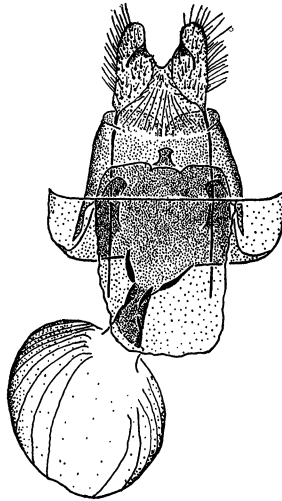
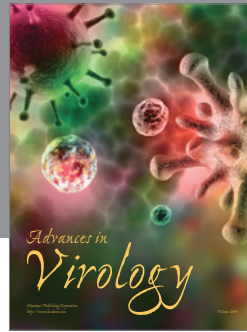
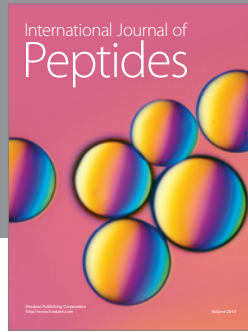
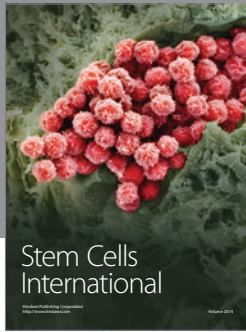


THE TYPE OF *HESPERIA HORUS* EDWARDS (LEPIDOPTERA: HESPERIDAE).—Recently H. A. Freeman (1948, Ent. News, 59:203) placed *horus* in the synonymy of *Hesperia metea licinus* Edwards. He did not, however, have access to the holotype of *horus* which is a unique female in the collection of the Museum of Comparative Zoology. Since Freeman based his synonymy of *horus* upon its facies, which are very unsatisfactory for a proper diagnosis, I felt that further investigation of the matter was warranted. I have now compared the genitalia of *horus* with those of *metea* and am convinced that Freeman was quite correct in placing *horus* as a synonym of *metea licinus*.

The figure given is a camera lucida reproduction of the genitalia of the holotype of *horus*.—NICHOLAS W. GILLHAM, Harvard University, Cambridge.



Ventral view of the genitalia of the holotype female of *Hesperia horus* Edwards (Type 8975; M. C. Z.; Genitalic Preparation 323, N. Gillham).



Hindawi

Submit your manuscripts at
<http://www.hindawi.com>

