

HLA Allele Associations and V-Beta T-Lymphocyte Expansions in Patients With Psoriasis, Harboring Toxin-Producing *Staphylococcus aureus*

Rola Ajib,¹ Lori Janbazian,¹ Elias Rahal,¹ Ghassan M. Matar,¹ Shukrallah Zaynoun,² Abdul-Ghani Kibbi,² and Alexander M. Abdelnoor¹

¹Department of Microbiology and Immunology, Faculty of Medicine, American University of Beirut, Beirut 1107 2020, Lebanon

²Department of Dermatology, Faculty of Medicine, American University of Beirut, Beirut 1107 2020, Lebanon

Received 9 May 2005; revised 4 July 2005; accepted 7 July 2005

HLA alleles have been associated with psoriasis. Toxin-producing strains of *Staphylococcus aureus* behave as superantigens, and if present in patients, might play a role in the exacerbation of psoriatic lesions by activating certain V-beta ($V\beta$) T-lymphocyte subsets. Allele frequencies in 22 patients and 22 controls (alleles determined by DNA/SSP typing) were used to calculate a relative risk of 4.7 ($P < .05$) for HLA-Cw6. *S. aureus* was isolated from the throat of 11 patients. Enterotoxins A and C were detected by agglutination in the culture filtrate of one isolate. The enterotoxin A and/or C genes were detected by PCR in 9 isolates, and transcripts were detected by RT-PCR in 7 of them. None of the isolates from controls harbored enterotoxin genes. $V\beta$ expansions were detected by RT-PCR in all 22 patients. Low or no $V\beta$ expansions were obtained in controls. The association of HLA-Cw6 with psoriasis in Lebanese concurs with that reported for other ethnic groups. Toxin-producing isolates that colonize patients might play a role in the exacerbation of psoriatic lesions.

INTRODUCTION

Psoriasis is a common, chronic, inflammatory disorder of the skin with a marked immunological basis. It is characterized by the involvement of activated T cells, macrophages, Langerhans cells, and keratinocytes [1, 2].

The etiologic aspects of psoriasis remain to be elucidated; however it is thought that the interaction of environmental and genetic factors contributes to the pathogenesis of the disease [3, 4, 5].

With respect to environmental factors, streptococcal and staphylococcal infections are among the most common triggering factors that initiate and exacerbate the disease. These microorganisms produce a group of toxins that behave as superantigens [6]. Superantigens differ from conventional antigens in that they do not un-

dergo processing. Rather, they bind from one side to the HLA class II molecule expressed on antigen presenting cells (APC) to a site outside the cleft, and from the other side to the lateral surface of the V-beta ($V\beta$) region of the T-cell antigen receptor (TCR). In doing so, they bypass the requirements for processing, presenting, and costimulatory molecules [6, 7, 8, 9]. Superantigens can activate a relatively large population of T cells that bear particular $V\beta$ elements, and result in an outpouring of cytokines that promote an immunological response [8, 9].

Staphylococcal enterotoxins are superantigens that seem to play a role in the pathogenesis of several immunologically-mediated diseases, such as psoriasis [10, 11].

On the other hand, genetic predisposing factors include the genes that encode HLA molecules. A number of HLA alleles have been associated with psoriasis. These include HLA-B13, B17, B39, B57, Cw6, Cw7, DR4, and DR7 [12].

The aims of this study were (1) to determine an HLA allele-psoriasis association in Lebanese patients, (2) to isolate and identify *Staphylococcus aureus* and *Streptococcus sp* from the throat of patients with psoriasis and controls, (3) to determine if there is clonal expansion of certain $V\beta$ T-lymphocyte subsets ($V\beta 2$, $V\beta 5.1$, $V\beta 8$, $V\beta 12$, and $V\beta 14$) in patients and controls, and (4) to

Correspondence and reprint requests to Alexander M. Abdelnoor, Department of Microbiology and Immunology, Faculty of Medicine, American University of Beirut, Beirut 1107 2020, Lebanon, E-mail: aanoor@aub.edu.lb

This is an open access article distributed under the Creative Commons Attribution License which permits unrestricted use, distribution, and reproduction in any medium, provided the original work is properly cited.

determine whether the *S aureus* isolates were enterotoxin (superantigen)-producing strains.

METHODS

Subjects

Twenty-two psoriatic patients (10 guttate, 9 vulgaris, and 3 pustular) included in this study were referred from the Dermatology Out-Patient Department, American University Of Beirut, Medical Center. Twenty-two healthy volunteers who had no known history of psoriasis served as controls.

Blood specimens

Blood was collected in citrated tubes. Following centrifugation, the buffy coat was aspirated and used for the determination of HLA class I and II alleles and V β subset expansion.

Throat cultures

Throat swabs were collected from the 22 patients and controls, and cultured aerobically on sheep-blood agar plates (S-BAP). Suspected Staphylococci colonies were cultured in trypticase soy broth and tested for coagulase production, which is characteristic of *S aureus*.

Determination of HLA alleles, relative risks, odds ratios, and P values

A, B, C, DR, and DQ alleles and their frequencies were determined in psoriasis patients and controls. DNA was extracted from the buffy coat using GFX Genomic Blood DNA Purification kit (Amersham Pharmacia Biotech, Upsalla, Sweden), followed by amplification of alleles by PCR, utilizing the Micro SSP HLA DNA Typing Trays (One Lambda, Inc, Canoga Park, Calif).

MHC profiles were determined for all psoriasis patients, and controls. The relative risks, odds ratios, and P-values were calculated for each allele using the software package Stat Calc EpiInfo version 6.0 (Center For Disease Control, and Prevention, 1994).

Determination of T-cell V β subset expansion by RT-PCR

Clonal expansion of V β T-lymphocyte subsets was determined in psoriasis patients, and controls. RNA was extracted from buffy coat using trizol reagent (total RNA isolation reagent is a monophasic solution of phenol and guanidine isothiocyanate provided by Life Technologies Inc, Gaithersburg, Md) and RT-PCR was performed on RNA extracts using the Ready-To-Go You-Prime First-Strand Beads (Amersham Pharmacia Biotech, Upsalla, Sweden). The RNA sample (900 ng) and the control mix beads (rabbit globulin mRNA buffer and 8 pmol each of 5'-specific globulin primer; 5'-d ACA CTT CTG GTC CAG TCC GAC TGA G-3' and 3'- specific primer; 5'-d GCC ACT CAC TCA GAC TTT ATT CAA A-3') were each made up to 23 μ L with DEPC-treated water, in RNase-free

microcentrifuge tubes. The tubes were then heated at 65°C in a thermocycler for 10 minutes and immediately chilled on ice for 2 minutes. The RNA solution and the control mixed solution were transferred to the tubes of First-Strand Reaction Mix Beads without mixing. 0.5 μ g of oligo(dT) and DEPC-treated water were added to reach a final volume of 33 μ L. Tubes were incubated at room temperature for one minute then at 37°C for 60 minutes. The synthesized cDNA was subjected to PCR using the following previously published primers [13].

- (i) V β 2: 5'-TCATCAACCATGCAAGCCTGACCT-3'.
- (ii) V β 5.1: 5'-ATACTTCAGTGAGACACAGAGAAAC-3'.
- (iii) V β 8: 5'-ATTTACTTTAACAACAACGTTCCG-3'.
- (iv) V β 12: 5'-GGGGTCGACAAAGGAGAAGTCTCAG-AT-3'.
- (v) V β 14: 5'-GTCTCTCGAAAAGAGAAGAGGAAT-3'.
- (vi) C β (antisense primer): 5'-TTCTGATGGCTCAAA-CAC-3'.

Serological detection of staphylococcal enterotoxins A, B, C, and D

Detection of enterotoxins in culture filtrates obtained from growing *S aureus* isolates on trypticase soy agar (Difco, Detroit, Mich) was done using the staphylococcal enterotoxin-Reverse Passive Latex Agglutination (SET-RPLA) kit according to the method described by the manufacturer (Oxoid Limited, Basing Stoke Hampshire, England).

Detection of staphylococcal enterotoxins A, B, C, and D genes by the polymerase chain reaction

PCR was performed for the detection of staphylococcal enterotoxins A, B, C, and D genes on all *S aureus* isolates from patients and controls. The primers for the four enterotoxin genes were selected from their nucleotide sequences (14–17). The sense and antisense primers used for each of the enterotoxins were as follows.

- (i) Enterotoxin A
 - (a) Sense: 5'-GCA GGG AAC AGC TTT AGG CAA TCT T-3'.
 - (b) Antisense: 5'- GAT TAA TCC CCT CTG AAC CTT CCC A-3'.
- (ii) Enterotoxin B
 - (a) Sense: 5'-CAC CCA ACG TTT TAG CAG AGA GTC A-3'.
 - (b) Antisense: 5'-CAG GTA CTC TAT AAG TGC CTG CCT T-3'.

TABLE 1. Toxin production by *Staphylococcus aureus* isolates, and Cw6 allele and V β expansions in patients with psoriasis.

Patient number	<i>Staphylococcus aureus</i> isolated; toxin production			Patient		
	Serology	Gene	Transcript	Type of psoriasis	V β expansion	Cw6
1	-ve	C	-ve	Vulgaris	2, 5.1, 8	-ve
2	-ve	A	-ve	Vulgaris	2, 5.1, 8	+ve
3	-ve	A	+ve	Pustular	2, 5.1, 8	-ve
4	-ve	C	-ve	Vulgaris	2, 5.1, 8 12, 14	+ve
5	-ve	C	+ve	Vulgaris	2, 5.1, 8	+ve
6	-ve	-ve	-ve	Guttate	2, 5.1, 8 12, 14	+ve
7	A, C	A, C	+ve	Vulgaris	2, 5.1, 8 12, 14	+ve
8	-ve	-ve	-ve	Guttate	2, 5.1, 8 12, 14	-ve
9	-ve	A	+ve	Vulgaris	2, 5.1, 8 12, 14	+ve
10	-ve	A, C	+ve	Vulgaris	2, 5.1, 8 12, 14	+ve
11	-ve	A	-ve	Guttate	2, 5.1, 8	+ve

(iii) Enterotoxin C

(a) Sense: 5'- CAA CTG AGT TTA CTG GTA CGA TGG GT-3'.

(b) Antisense: 5'- CTG GTG CAG GCA TCA TAT CAT ACC-3'.

(iv) Enterotoxin D

(a) Sense: 5'-GGT ACT TCT AGG AAG GAC TAG CAT GT-3'.

(b) Antisense: 5'-GAG TGA CAC CTC CAT ATG TAC AAG-3'.

Ten μ L of extracted DNA and 90 μ L of amplification mix {30 pmol of sense primer, 30 pmol of antisense primer, 200 μ M of each deoxynucleoside triphosphate (AB gene, Surrey, UK), 10 μ L of PCR buffer (AB gene, Surrey, UK), and 0.5 μ L of Taq polymerase (AB gene, Surrey, UK)} were heated in a thermocycler at 94°C for 10 minutes followed by 35 cycles, each cycle included 94°C for 1 minute, 55°C for 1 minute, and 72°C for 1 minute. The cycles were terminated by a final extension step at 72°C for 10 minutes. The PCR amplicons obtained were detected by subjecting them to agarose gel electrophoresis and visualized using a UV transilluminator and photographed with a Polaroid film type 667.

Determination of staphylococcal enterotoxin transcripts by RT-PCR

Extraction of RNA from *S aureus* isolates that were enterotoxin gene-positive was performed utilizing the

TABLE 2. Relative risk, odd value, and *P* value of MHC alleles in patients with psoriasis.

Class I alleles	Relative risk	Odds ratio	<i>P</i> values
B13	3.65	4.1	< .05
B50	3.8	4.2	< .05
B57	2.2	2.3	< .05
Cw6	4.7	13.8	< .05

RNeasy Minikit (Qiagen, Hilden, Germany) and RT-PCR was performed on the RNA extracts using the Ready-To-Go You-Prime First-Strand Beads (Amersham Pharmacia Biotech). The manufacturers' procedure was followed in both cases. Amplification of cDNA was done using the above-mentioned primers and procedure.

RESULTS

The results are summarized in Table 1.

Bacterial identification

S aureus was isolated from the throat of 11 of 22 psoriasis patients, and 2 of 22 apparently normal controls. Streptococci grew in throat cultures of all patients and controls but they were not grouped nor speciated.

HLA profiles relative risk, odds ratio, *P* values

Alleles having a RR >1 and *P* < .05 are listed in Table 2. The highest RR was obtained for Cw6 (RR = 4.7, *P* < .05).

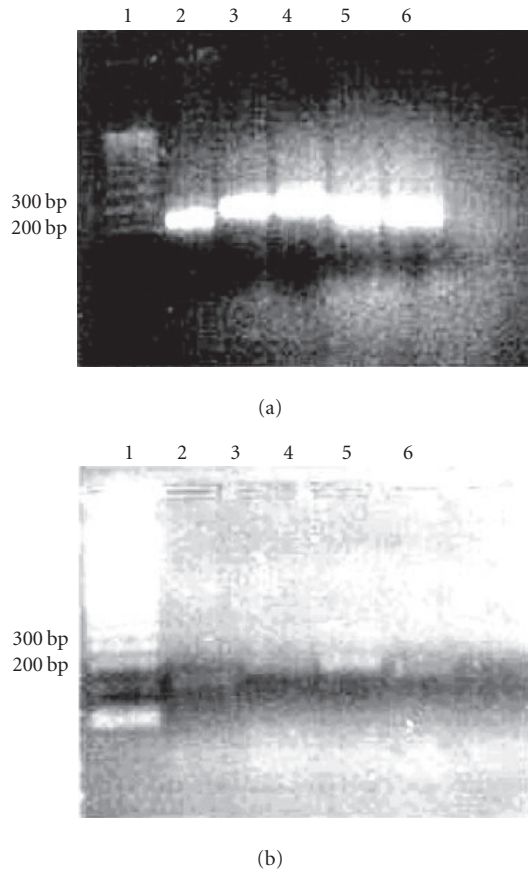


FIGURE 1. (a) RT-PCR amplification of the V β subsets in psoriatic patients. Lane 1: 100-bp ladder, lane 2: V β 2, lane 3: V β 5.1, lane 4: V β 8, lane 5: V β 12, lane 6: V β 14, (b) RT-PCR amplification of the V β subsets in healthy individuals. Lane 1: 100-bp ladder, lane 2: V β 2, lane 3: V β 5.1, lane 4: V β 8, lane 5: V β 12, lane 6: V β 14.

T-cell V β subset expansion—RT-PCR

V β 2, V β 5.1, and V β 8 T-lymphocyte expansions were detected in high intensity in all 22 patients. In addition, V β 12 and V β 14 expansions were detected in 6 of 11 patients who harbored *S aureus*. Low or no V β expansions were obtained in healthy controls. Representative V β region amplicons as observed by gel electrophoresis are shown in Figures 1a and 1b.

Production of staphylococcal enterotoxins A, B, C, and D in vitro

Enterotoxins A and C were detected in the culture filtrate of one *S aureus* isolate obtained from a psoriasis patient (titers of 1/64 and 1/128, resp). Enterotoxins were not detected in culture filtrates of all other isolates.

Detection of staphylococcal enterotoxin A, B, C, and D genes

Four of 11 isolates harbored only the enterotoxin A gene, 3 of 11 harbored only the enterotoxin C gene, and 2

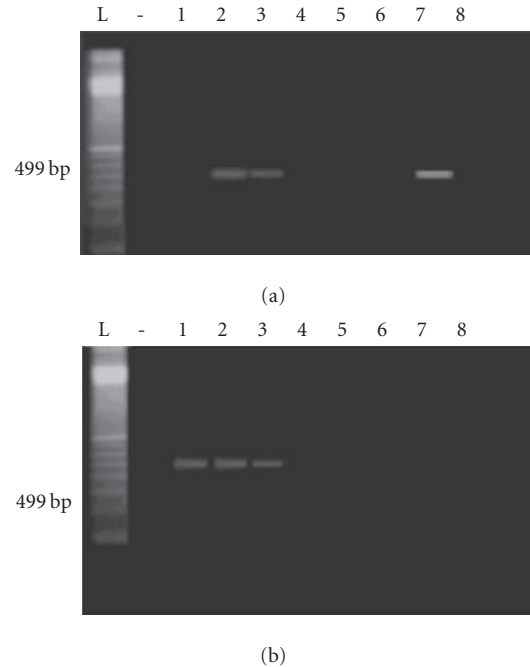


FIGURE 2. Enterotoxin A gene amplification: lanes L and (-): 100-bp ladder and negative control. (a) Lanes 2–8: *S aureus* amplicons from psoriatic patients. (b) Lanes 1–3: *S aureus* amplicons from psoriatic patients. Lanes 4 and 5: *S aureus* amplicons from controls.

of 11 harbored both the enterotoxin A and C genes (total of 9 isolates having an A and/or C enterotoxin gene). None of the isolates from healthy controls harbored enterotoxin genes (Figures 2a, 2b, 3a, and 3b).

Determination of staphylococcal enterotoxins transcripts

Transcripts were detected in 4 of 6 isolates that harbored the enterotoxin A gene and 3 of 5 that harbored the enterotoxin C gene (Figures 4 and 5).

Relationship between toxin production by isolates and patients status

All 5 isolates in which enterotoxin C transcript and/or gene were detected were obtained from patients with psoriasis vulgaris. Four of the isolates in which enterotoxin A transcript and/or gene were detected were obtained from patients with psoriasis vulgaris, 1 isolate was obtained from a patient with pustular psoriasis, and 1 from a patient with guttate psoriasis. Transcript and/or gene-positive (A and/or C) isolates were obtained from 4 patients with psoriasis vulgaris who had V β 12 and V β 14 expansions.

DISCUSSION

By cross linking MHC class II molecules on macrophages to T-cell receptors having the appropriate

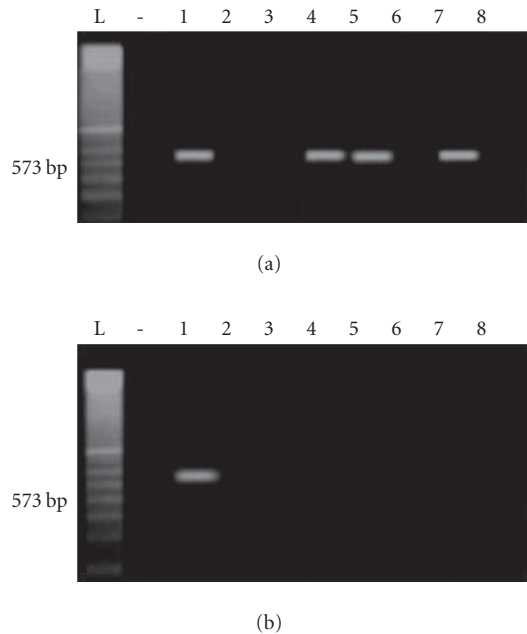


FIGURE 3. PCR done for the enterotoxin C gene on the 16 *S aureus* isolates. (a) Lane L: 100-bp ladder; lane (-): negative control; lanes 1–8: amplicons of *S aureus* isolates from psoriatic patients. (b) Lane L: 100-bp ladder; lane(-): negative control; lanes 1–8: amplicons of *S aureus* isolates from psoriatic patients in lane 1 and from control patients following in sequential order.

$V\beta$ specificity, superantigens can cause excessive stimulation of both cell types. Up to 20% of all T-cells can be stimulated by any superantigen. The excessive production of cytokines by both macrophages and T-cells are thought to contribute to pathogenicity [14].

The fact that $V\beta$ expansions were detected in all 22 patients supports the report of Leung et al [11, 15] who suggested a role of superantigens in the pathogenesis of psoriasis. Superantigens include some bacterial toxins such as those elaborated by certain strains of *Streptococci* and *S aureus*. Davidson et al [16] reported on the relationship between *Streptococcus* and *Staphylococcus* colonization of the tonsils, and exacerbation of pustular and chronic plaque (vulgaris) lesions. *S sp* was isolated from the throat of all patients. However, these isolates were not grouped or speciated. Moreover, their ability to elaborate toxins was not investigated. It could very well be that some of the $V\beta$ expansions observed in patients might be due to toxins elaborated by the streptococcal isolates [17]. In this study we focused on toxin production by *S aureus* isolated from patients. Serological detection of staphylococcal toxins in culture filtrates did not appear to be sensitive. Toxins A and C were detected in the culture filtrate of only one isolate. Hence, we resorted to the detection of genes that code for these toxins and their transcripts. Nine of 11 isolates were toxin A and /or C transcript and/or gene-positive. *Staphylococcus* toxin A causes $V\beta 3$ and 11 expansions, both of which were not tested

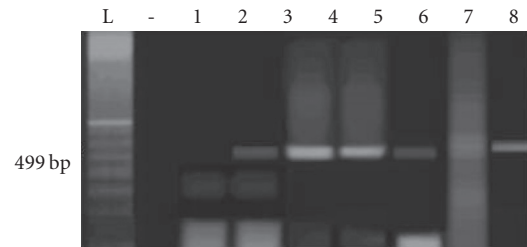


FIGURE 4. RT-PCR amplification of the enterotoxin A gene transcripts on the 6 *S aureus* isolates that tested positive for the corresponding gene by PCR. Lane L: 100-bp ladder; lane (-): negative control; lanes 1–7: RT-PCR amplicons of *S aureus* isolates from psoriatic patients; lane 8: 550-bp positive control.

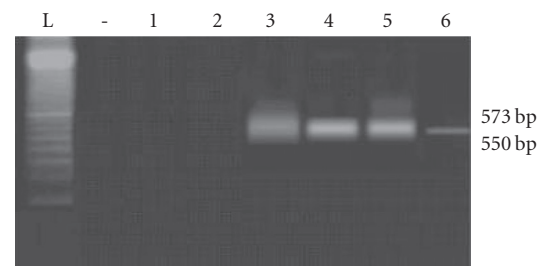


FIGURE 5. RT-PCR amplification of the enterotoxin C gene transcripts on the 5 *S aureus* isolates that tested positive for the corresponding gene by PCR. Lane L: 100-bp ladder; lane (-): negative control; lanes 1–5: RT-PCR amplicons of *S aureus* isolates from psoriatic patients; lane 6: 550-000-bp positive control.

in this investigation. On the other hand, *Staphylococcus* C toxin causes $V\beta 5.1$, 12, and 14 expansions [14]. There was an expansion of $V\beta 5.1$ in all patients and $V\beta 12$ and $V\beta 14$ in 2 patients whose *S aureus* isolates were toxin C transcript and/or gene-positive. Four of the 9 gene-positive isolates were transcript-negative. It might be that the transcripts were present in undetectable amounts, or transcription was inhibited in vitro. Most of the patients (7 of 11) from whom *S aureus* was isolated had psoriasis vulgaris. However, it was not attempted to correlate the presence of toxin-producing strains with the type of psoriasis because of the small number of patients included.

Genetic predisposition studies related to psoriasis have been reported [12]. A number of HLA alleles have been associated with psoriasis. In concurrence with other ethnic group studies, Cw6, appeared to be associated with psoriasis in Lebanese patients. The calculated relative risk for the 22 patients was 4.7 ($P < .05$). Moreover, 8 of 11 patients from whom *S aureus* was isolated were Cw6 positive.

In conclusion, our data support, but does not confirm the role of superantigens such as toxins produced by *S sp* and *S aureus* in the exacerbation of psoriatic lesions in genetically predisposed individuals. The first part of this

study focused on the *S aureus* isolates as producers of superantigens. Work in progress deals with the streptococcal isolates as potential producers of superantigens in psoriatic patients.

[17] Abe J, Forrester J, Nakahara T, Lafferty JA, Kotzin BL, Leung DYM. Selective stimulation of human T cells with streptococcal erythrogenic toxins A and B. *J Immunol.* 1991;146(11):3747–3750.

REFERENCES

- [1] Linden KG, Weinstein GD. Psoriasis: current perspectives with an emphasis on treatment. *Am J Med.* 1999;107(6):595–605.
- [2] Stern RS. Psoriasis. *Lancet.* 1997;350(9074):349–353.
- [3] Krueger GG, Duvic M. Epidemiology of psoriasis: clinical issues. *J Invest Dermatol.* 1994;102(6):14S–18S.
- [4] Ortonne JP. Aetiology and pathogenesis of psoriasis. *Br J Dermatol.* 1996;135(suppl 49):1–5.
- [5] Ortonne JP. Recent developments in the understanding of the pathogenesis of psoriasis. *Br J Dermatol.* 1999;140(suppl 54):1–7.
- [6] Kotzin BL, Leung DYM, Kappler J, Marrack P. Superantigens and their potential role in human disease. *Adv Immunol.* 1993;54:99–166.
- [7] Al-Daccak R, Mehindate K, Damdoumi F, et al. Staphylococcal enterotoxin D is a promiscuous superantigen offering multiple modes of interactions with the MHC class II receptors. *J Immunol.* 1998;160(1):225–232.
- [8] Herman A, Kappler JW, Marrack P, Pullen AM. Superantigens: mechanism of T-cell stimulation and role in immune responses. *Annu Rev Immunol.* 1991;9:745–772.
- [9] Marrack P, Kappler J. The staphylococcal enterotoxins and their relatives. *Science.* 1990;248(4956):705–711.
- [10] Balaban N, Rasooly A. Staphylococcal enterotoxins. *Int J Food Microbiol.* 2000;61(1):1–10.
- [11] Leung DYM, Travers JB, Giorno R, et al. Evidence for a streptococcal superantigen-driven process in acute guttate psoriasis. *J Clin Invest.* 1995;96(5):2106–2112.
- [12] Bos JD, De Rie MA. The pathogenesis of psoriasis: immunological facts and speculations. *Immunol Today.* 1999;20(1):40–46.
- [13] Dunn DA, Gadenne A-S, Simha S, Lerner EA, Bigby M, Bleicher PA. T-cell receptor V β expression in normal human skin. *Natl Acad Sci USA.* 1993;90(4):1267–1271.
- [14] Rosen F, Geha R. *Case Studies in Immunology. A Clinical Companion.* 4th ed. New York, NY:Garland Publishing; 2004.
- [15] Leung DYM, Walsh P, Giorno R, Norris DA. A potential role for superantigens in the pathogenesis of psoriasis. *J Invest Dermatol.* 1993;100:225–228.
- [16] Davison SC, Allen MH, Mallon E, Barker JN. Contrasting patterns of streptococcal superantigen-induced T-cell proliferation in guttate vs. chronic plaque psoriasis. *Br J Dermatol.* 2001;145(2):245–251.



Hindawi
Submit your manuscripts at
<http://www.hindawi.com>

