

Functional organization of a single *nif* cluster in the mesophilic archaeon *Methanosarcina mazei* strain Gö1

CLAUDIA EHLERS,¹ KATHARINA VEIT,¹ GERHARD GOTTSCHALK^{1,2} and RUTH A. SCHMITZ^{1,3}

¹ Abteilung Allgemeine Mikrobiologie, Institut für Mikrobiologie und Genetik der Georg-August-Universität, Grisebachstr. 8, 37077 Göttingen, Germany

² Göttingen Genomics Laboratory, Institut für Mikrobiologie und Genetik der Georg-August-Universität, Grisebachstr. 8, 37077 Göttingen, Germany

³ Author to whom correspondence should be addressed (rschmit@gwdg.de)

Received June 6, 2002; accepted July 10, 2002; published online July 29, 2002

Summary The mesophilic methanogenic archaeon *Methanosarcina mazei* strain Gö1 is able to utilize molecular nitrogen (N₂) as its sole nitrogen source. We have identified and characterized a single nitrogen fixation (*nif*) gene cluster in *M. mazei* Gö1 with an approximate length of 9 kbp. Sequence analysis revealed seven genes with sequence similarities to *nifH*, *nifI*₁, *nifI*₂, *nifD*, *nifK*, *nifE* and *nifN*, similar to other diazotrophic methanogens and certain bacteria such as *Clostridium acetobutylicum*, with the two *glnB*-like genes (*nifI*₁ and *nifI*₂) located between *nifH* and *nifD*. Phylogenetic analysis of deduced amino acid sequences for the nitrogenase structural genes of *M. mazei* Gö1 showed that they are most closely related to *Methanosarcina barkeri nif2* genes, and also closely resemble those for the corresponding *nif* products of the gram-positive bacterium *C. acetobutylicum*. Northern blot analysis and reverse transcription PCR analysis demonstrated that the *M. mazei nif* genes constitute an operon transcribed only under nitrogen starvation as a single 8 kb transcript. Sequence analysis revealed a palindromic sequence at the transcriptional start site in front of the *M. mazei nifH* gene, which may have a function in transcriptional regulation of the *nif* operon.

Keywords: *GlnB*-like proteins, *nif* genes, nitrogen fixation, nitrogen regulation.

Introduction

Biological nitrogen fixation, the enzymatic reduction of atmospheric nitrogen (N₂) to ammonia, is not limited to the bacterial domain, but is also observed in several methanogenic members of the archaeal domain. Nitrogenase, the enzyme complex of dinitrogenase and dinitrogenase reductase, is responsible for the reduction of molecular nitrogen; it is highly conserved in structure, function, and amino acid sequence across both domains (Lobo and Zinder 1992, Young 1992, Fischer 1994, Rees and Howard 1999). The dinitrogenase, which is an $\alpha_2\beta_2$ heterotetramer containing the P-cluster and the FeMo-cofactor, is encoded by *nifD* and *nifK*; the nitrogen-

ase reductase is a homodimer with a single [4Fe-4S]-cluster linking the subunits and is encoded by *nifH* (Georgiadis et al. 1992, Rees and Howard 1999 and papers cited therein). In bacteria, the genes *nifH*, *nifD* and *nifK*, which encode the molybdenum-containing nitrogenase, are typically found together in a single operon and are physically adjacent to other *nif* genes as part of a larger *nif* regulon. Downstream of *nifK*, the *nifE* and *nifN* genes, which are essential for FeMo-cofactor assembly (Dean et al. 1993), are found in a separate operon. In Archaea, genes homologous to the bacterial *nif* genes have been identified, and nitrogen fixation has been observed in several methanogenic species (Lobo and Zinder 1992, Young 1992, Bult et al. 1996, Chien and Zinder 1996, Haselkorn and Buikema 1996, Kessler et al. 1997, Smith et al. 1997). The discovery of genes homologous to *nifH*, *nifD* and *nifK* suggests that the basic mechanism of nitrogen fixation is similar in Bacteria and Archaea and predicts that most methanogenic nitrogenases contain a molybdenum-cofactor (Chien and Zinder 1996, Kessler et al. 1997). It was recently shown that, unique among the archaea, *Methanosarcina acetivorans* appears to contain all three types of nitrogenases: the molybdenum nitrogenase and two alternative nitrogenases (Galagan et al. 2002). In methanogenic archaea, the nitrogen fixation genes *nifH*, *nifD*, *nifK*, *nifE* and *nifN* are present in the same order as in bacteria (Dean and Jakobson 1992). However, in contrast, (i) methanogenic *nif* gene promoters are typical archaeal promoters, and the transcriptional apparatus is similar to that of Eucarya (Langer and Zillig 1993, Marsh et al. 1994, Langer et al. 1995, Qureshi et al. 1995, Hausner et al. 1996, Thomm 2000, Bell and Jackson 2001), (ii) the archaeal *nif* genes are present in a single operon, and (iii) all diazotrophic methanogens contain two open reading frames (ORFs) inserted between *nifH* and *nifD* that show a strong similarity to *glnB* (Sibold et al. 1991, Merrick and Edwards 1995, Arcondeguy et al. 2001, Kessler et al. 2001). Recently, this *nif* gene organization with the two *glnB*-like genes, which have been renamed *nifI*₁ and *nifI*₂ (Arcondeguy et al. 2001), has also been found in *Clostridium acetobutylicum* (Nölling et al.

2001) and *Clostridium beijerinckii* (Chen et al. 2001). The presence of the *nifI* ORFs within the bacterial *nif* operon may be the result of a horizontal interdomain gene transfer, or this respective arrangement is ancestral and other bacteria have lost it.

As with bacterial nitrogen fixation, *nif* gene transcription in methanogenic archaea is regulated by the availability of nitrogen (Souillard and Sibold 1989, Chien and Zinder 1994, Kessler et al. 1998). However, because of the major differences between archaeal and bacterial transcription, it is likely that the mechanisms of methanogenic *nif* gene regulation differ significantly from bacterial *nif* regulation. Transcriptional regulation of *nif* genes in response to the nitrogen status of the cells has been studied in detail for *Methanococcus marisplacidis* and *Methanosarcina barkeri* 227; experimental evidence obtained by Leigh and coworkers showed that nitrogen metabolism genes in *Methanococcus* and *Methanobacterium* species are coordinately regulated at the transcriptional level by a common repressor binding site (Cohen-Kupiec et al. 1997, Kessler and Leigh 1999). In *M. barkeri* 227, *nif* regulation is also mediated by a negative mechanism; however, in contrast to *Methanococcus*, this mechanism does not appear to be based on an operator site (Chien et al. 1998).

Our goal was to analyze the regulatory network of nitrogen metabolism and nitrogen fixation in *M. mazei* strain Gö1. This mesophilic archaeon belongs to the methylotrophic methanogens of the order Methanosarcinales and is able to grow on H₂ plus CO₂, methanol, methylamines and acetate. The pathways of methanogenesis from these substrates have been analyzed in detail in recent years (Deppenmeier et al. 1990, Thauer 1998, Ferry 1999) and the genome of *M. mazei* strain Gö1 has been sequenced by the Göttingen Genomics Laboratory (Deppenmeier et al. 2002). Here we report on the arrangement and expression of *nif* genes in *M. mazei*.

Materials and methods

Bacterial strains and plasmids

Methanosarcina mazei strain Gö1 (DSM3647) was obtained from the DSM. The pTZ19R sequencing vector (Pharmacia) and pSK+ Bluescript (Stratagene, La Jolla, CA) were used for subcloning and DNA sequencing.

Growth

Methanosarcina mazei Gö1 was grown without shaking at 37 °C, in 5- or 25-ml closed growth tubes on 150 mM methanol in a minimal medium described previously (Deppenmeier et al. 1990). Growth generally took place in a nitrogen atmosphere containing 20% CO₂. For nitrogen-limiting growth conditions, ammonium was omitted from the medium. Control growth experiments for nitrogen fixation were performed in either an argon atmosphere or a hydrogen atmosphere containing 20% CO₂. In general, growth was monitored by determining the optical density of the cultures at 600 nm (OD₆₀₀).

Cloning and nucleotide sequencing

The complete genomic sequence of *M. mazei* strain Gö1 was determined by a whole-genome-shotgun approach (Deppenmeier et al. 2002). The generated sequence readings were assembled into contigs with P. Greens PHRAP assembling tools and were edited with GAP, which is part of the STADEN software package (Staden et al. 2000). Sequence analysis was performed with the Genetics Computer Group (GCG) software package (Devereux et al. 1984). The nucleotide sequences for *nifH*, *nifI*, *nifI*₂, *nifD*, *nifK*, *nifE* and *nifN* have been submitted to GenBank (Accession Number AY029234).

RNA isolation and Northern blot analyses

Methanosarcina mazei Gö1 cells from exponentially growing cultures (5 ml or 50 ml, OD₆₀₀ = 0.3–0.4), grown with N₂ or 10 mM NH₄⁺ as the nitrogen source, were anaerobically centrifuged in the growth tubes at 3000 g for 10 min and resuspended in 30 mM sodium acetate, pH 5.2. After incubation with 1.5% sodium dodecyl sulfate (SDS), RNA was extracted using the RNeasy Kit (Qiagen, Santa Clarita, CA) according to the manufacturer's protocol and treated with DNaseI. Following ethanol precipitation in the presence of 4 M LiCl, the RNA pellet was resuspended in 30 or 60 µl of RNase-free water and stored at –70 °C. The RNA (9–12 µg) was separated by electrophoresis in a 1% denaturing agarose gel containing 6% formaldehyde, and then transferred to nylon membranes (Hybond-N, Amersham/Pharmacia, Piscataway, NJ) by vacuum blotting according to the manufacturer's directions. After 3 min of UV cross-linking, Northern hybridization was performed to locate the mRNA of interest (Sambrook et al. 1989). Filters were hybridized overnight at 55 °C with [α -³²P] ATP-labeled *nifH*, *nifK* and *nifN* probes in the presence of 5× SSC (1× SSC is 0.15 M NaCl plus 0.15 M sodium citrate), 0.02% SDS and 0.1% laurylsarcosine. After hybridization, the membranes were washed twice with 2× SSC containing 0.1% SDS at room temperature for 5 min, twice with 2× SSC containing 0.1% SDS at 55 °C for 30 min, and twice with 0.1× SSC containing 0.1% SDS at room temperature for 30 min. The hybridized mRNA was detected with a PhosphorImager and analyzed with ImageQuant 1.2 software (Molecular Dynamics). The RNA marker standard used was obtained from New England Biolabs (U.K.).

Generating DNA probes

The DNA probes for *nifH*, *nifK* and *nifN* and for 16S rRNA were amplified by PCR using genomic DNA from *M. mazei* Gö1 as template. The oligonucleotides used were: *nifH* sense primer (5'-GCAATCTACGGAAAGGGCGG-3') and anti-primer (5'-CATCAGTTCCCCACTGGCAAC-3'); *nifK* sense primer (5'-CCCATGTGAAGAGATAACCAGAG-3') and anti-primer (5'-CGTCTTCAATGATAACTCCGACG-3'); *nifN* sense primer (5'-GAAGTGCCCTTGCCTTTAAA GG-3') and anti-primer (5'-CCGGACTTTCAGGTTTTTCCG -3'); *glnK*₁ sense primer (5'-TAGGATAGAGAATTCCTAC TGGTGGTC-3') and anti-primer (5'-CCATACAGTGTAAAG

CTTCGTTTATAGCC-3'); and 16S rDNA sense primer (5'-GCAGCAGGCGCGAAAAC-3') and antiprimer (5'-CGTTTACGGCTGGGACTA-3'). Reactions were carried out in 100 μ l volumes with Taq polymerase (New England Biolabs, U.K.) and primers at a concentration of 0.3 μ M. The annealing temperature was 58 °C (49 °C for 16S rDNA) and synthesis was carried out over 25 cycles of 30 s each. The PCR products, which were 450 bp (*nifH*), 417 bp (*nifK*), 438 bp (*nifN*), 415 bp (*glnK₁*) and 420 bp (16S rDNA), respectively, were purified by gel electrophoresis and extracted with the QIAQuick extraction kit (Qiagen). The purified PCR products (1–1.5 μ g) were labeled with α -³²P-ATP using the random labeling system from Gibco BRL (Random Primers Labeling System) according to the manufacturer's protocol.

Reverse transcription PCR

Transcriptional analysis by reverse transcription PCR (RT-PCR) was carried out on DNA-free RNA extracted with phenol/chloroform and treated with DNaseI (Sambrook et al. 1989) from cells grown with N₂ or 10 mM NH₄⁺ as the nitrogen source. Control PCR reactions using RNA in the absence of reverse transcriptase showed that the isolated RNA preparations were free of genomic DNA. The RT-PCR reactions were carried out using the OneStep RT-PCR Kit (Qiagen) as recommended by the supplier, using 0.1 μ g RNA and 0.6 μ M sense primer and antiprimer for *nifH*, *nifK*, *nifN*, *glnK₁* and 16S rDNA (see above). The control RT-PCR of 16S rDNA was carried out with 10 ng RNA and the respective primers. The annealing temperatures were 58 °C (*nifH*, *nifK*, *nifN*, *glnK₁*) and 49 °C (16S rDNA). Products for each primer pair and growth condition were separated on 1.5% agarose gels and quantified using the GelDoc2000 Quantity One software (Bio-Rad Laboratories, Hercules, CA).

Determination of the transcriptional start site

The *nif* transcriptional start site was determined with the 5'-RACE system, as recommended by the supplier (Gibco BRL), using 1 μ g of total RNA (DNA-free) from cells grown under nitrogen starvation and the primers *nifH*-GSP1 (5'-TGC CCCTGCCTGCACATCC-3') and *nifH*-GSP2 (5'-CTCGGG CCCTCCTGATTCC-3'), which hybridize to bases +297 to +278 and bases +269 to +250 of *nifH*, respectively. The resulting PCR product (310 bp) was cloned into pSK+ Bluescript (Stratagene) and sequenced in both directions with an ABI PRISM 377 DNA sequencer.

Results and discussion

Our goal was to study nitrogen regulation in the methanogenic archaeon *M. mazei* strain Gö1. By analyzing the sequences obtained from the genome sequencing project of *M. mazei* Gö1, we identified a single nitrogen fixation (*nif*) gene cluster. We characterized growth of *M. mazei* during nitrogen starvation and analyzed the structure and transcriptional regulation of this *nif* cluster.

Diazotrophic growth of *M. mazei* Gö1

To determine if *M. mazei* is able to fix molecular nitrogen and use it as the sole nitrogen source, growth under nitrogen-limiting conditions was analyzed. Growth experiments were performed under anaerobic conditions in defined nitrogen-depleted mineral media in an N₂/CO₂ (80%/20%) gas atmosphere, with methanol as the carbon source. For nitrogen-sufficient growth, the medium was supplemented with 10 mM ammonium or 4 mM glutamine as the nitrogen source (see

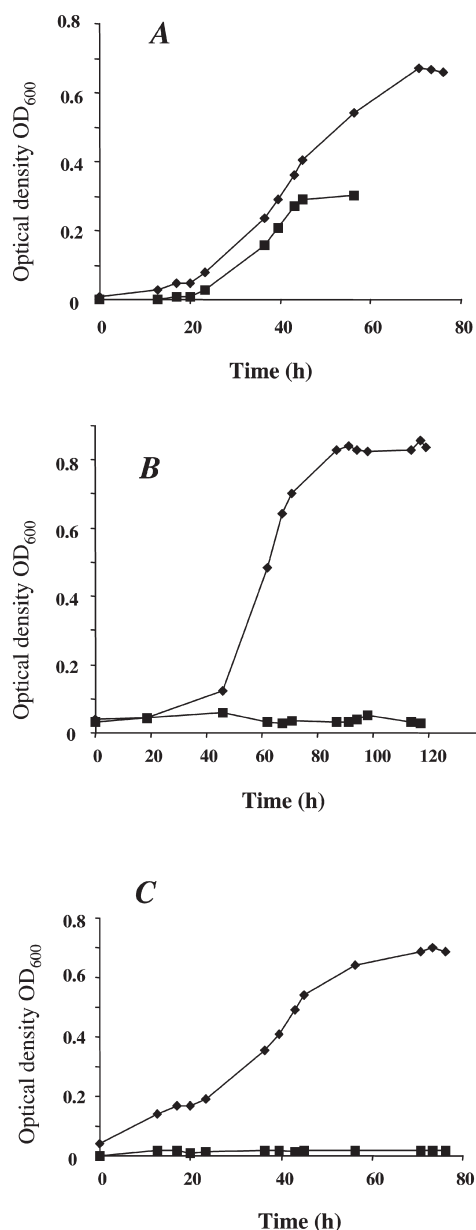


Figure 1. Growth of *M. mazei* with different nitrogen availabilities. Cells were grown on 150 mM methanol in 5 ml of minimal medium in a nitrogen gas atmosphere containing 20% CO₂ (A), a hydrogen gas atmosphere containing 20% CO₂ (B), or an argon gas atmosphere containing 20% CO₂ (C). The medium was supplemented with 10 mM ammonium (◆) or contained no additional nitrogen source (■).

Materials and methods). *Methanosarcina mazei* showed significant growth when incubated under nitrogen-limiting conditions, with molecular nitrogen in the gas phase as the sole nitrogen source (Figure 1A). No growth was observed in the controls supplied with nitrogen-depleted medium in an argon/CO₂ (80%/20%) or a hydrogen/CO₂ (80%/20%) gas atmosphere (Figures 1B and 1C), indicating that growth of *M. mazei* in a gas atmosphere containing 80% molecular nitrogen resulted from nitrogen fixation. The doubling time under these nitrogen-limiting conditions was 13 h, versus 10 h when grown under nitrogen-sufficient conditions (Figure 1A). In addition to this decrease in growth rate, nitrogen-limited cultures showed a prolonged lag-phase and the cell yield was about twofold lower than under nitrogen-sufficient growth conditions (maximal optical density of OD₆₀₀ = 0.35 to 0.4 for nitrogen-limiting conditions, versus OD₆₀₀ = 0.75 for nitrogen-sufficient growth, Figure 1A). This reduced yield was likely caused by the ATP expenditure of N₂ fixation and the limited solubility of N₂ in the medium. Because the cultures were incubated without shaking, diffusion of N₂ into the medium appeared to be insufficient to support high density cultures.

Sequencing and nucleotide analysis of the *nif* gene cluster from *M. mazei* strain Gö1

The entire genome of *M. mazei* strain Gö1 has been sequenced by the Göttingen Genomics Laboratory (Deppenmeier et al. 2002). The assembled sequence data were searched for the presence of regions encoding methanogenic or bacterial subunits of nitrogenase. A single *nif* gene cluster, with an approximate length of 9 kbp, was detected. The fragment comprises seven open reading frames, each preceded by a putative ribosome-binding site and starting with the initiation codon ATG (or, in one case GTG), and terminated by stop codons TAA or TGA. Sequence analysis of this *nif* gene cluster was performed with the Genetics Computer Group (GCG) software package (Devereux et al. 1984), and revealed five genes with sequence similarities to nitrogen fixation genes *nifH*, *nifD*, *nifK*, *nifE* and *nifN*. In addition, two genes located between *nifH* and *nifD* showed sequence similarities to bacterial *glnB* genes (Sibold et al. 1991, Merrick and Edwards 1995, Arcondeguy et al. 2001) and were, therefore, designated *nifI*₁ and *nifI*₂, respectively. Additional open reading frames in the adjacent re-

gions on either side of the cluster have been tentatively identified as a flavine-containing oxidoreductase (upstream of *nifH*) and a periplasmic molybdate binding protein plus a molybdenum transporter (downstream of *nifN*). The order of the *M. mazei* nitrogen fixation genes is the same as in other diazotrophic methanogenic archaea and differs from most bacterial *nif* gene clusters in that the two *nifI* genes are located between *nifH* and *nifD* (Sibold et al. 1991, Chien and Zinder 1994, 1996, Kessler et al. 1998, Arcondeguy et al. 2001). Phylogenetic analysis of the deduced amino acid sequence of the *M. mazei* Gö1 *nif* genes showed that they are most closely related to *M. barkeri* *nif2* genes, suggesting that *M. mazei* Gö1 has a molybdenum-containing nitrogenase (Table 1).

In addition to the high similarity of *M. mazei* nitrogenase structural gene products to the *nif2* gene cluster of *M. barkeri* and the *nif* cluster of *M. acetivorans*, the genes showed a significantly higher similarity to the corresponding *nif* gene products of the Gram-positive bacterium *C. acetobutylicum* than to their archaeal counterparts in *M. maripaludis* and *Methanothermobacter thermoautotrophicus*. In addition, it was recently found that the *nif* cluster of *C. acetobutylicum* shows the same gene organization, as two *nifI* genes are located between *nifH* and *nifD* (Nölling et al. 2001). These findings suggest that the nitrogenase subunits of the *Methanosarcina* species are more closely related to the clostridial nitrogenases than to the archaeal nitrogenases of *Methanococcus* and *Methanothermobacter*.

The deduced amino acid sequences of the two *glnB*-like *nifI* genes showed considerable similarity to the corresponding gene products from the *nif* regions of other diazotrophic methanogens and *C. acetobutylicum* (Figure 2). The strongest similarities were observed in the B-loop region and the C-terminal regions just after the B-loop. In the T-loop regions, only the N-terminal regions showed a strong similarity (amino acids 33 to 42). In general, the GlnB-like proteins encoded by homologs of the *glnB* family located within *nif* clusters do not contain the conserved uridylylation site (tyrosine 51) of bacterial GlnB-like proteins in the T-loop, which was originally shown by Sibold et al. (1991), and differ significantly from bacterial GlnB-like proteins in the region N-terminal of amino acid residue 51 (amino acids 43 to 50). These findings suggest that NifI proteins encoded in *nif* clusters are unlikely to be co-

Table 1. Comparison of deduced amino acid sequences of *Methanosarcina mazei* *nif* genes with those of other methanogenic and nitrogen-fixing microorganisms. Percentage of identity was calculated using the GCG program (Deveraux et al. 1984).

Gene	<i>M. mazei</i> Gö1	<i>M. barkeri</i> (<i>nif2</i>)	<i>M. acetivorans</i>	<i>Methanococcus</i> <i>maripaludis</i>	<i>Methanothermobacter</i> <i>thermoautotrophicus</i>	<i>Clostridium</i> <i>acetobutylicum</i>	<i>Clostridium</i> <i>pasteurianum</i>	<i>Klebsiella</i> <i>pneumoniae</i>
<i>nifH</i>	100%	91%	90%	60%	61%	69%	68% (<i>nifH</i> ₁)	62%
<i>glnB'</i>	100%	88%	90%	56%	55%	49%	–	–
<i>glnB''</i>	100%	48%	76%	43%	48%	48%	–	–
<i>nifD</i>	100%	87%	88%	39%	39%	52%	52%	40%
<i>nifK</i>	100%	91%	91%	45%	40%	51%	49%	38%
<i>nifE</i>	100%	83%	87%	45%	45%	49%	53%	34%
<i>nifN</i>	100%	75%	85%	40%	36%	41%	– ¹	26%

¹ Sequence not available in public databases.

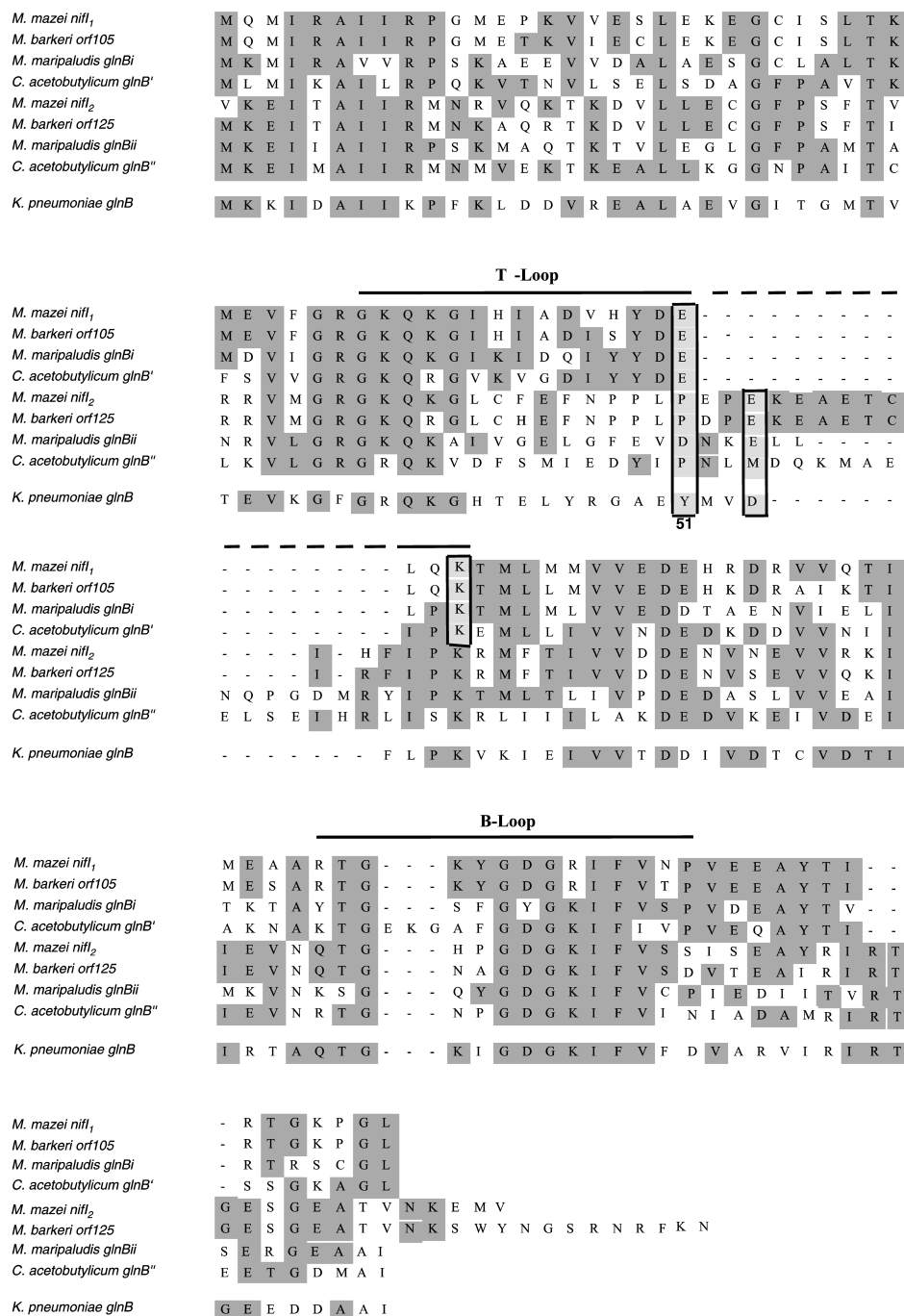


Figure 2. Alignment of the two *glnB*-like genes of *Methanosarcina mazei* located in the *nif* gene cluster, compared with the corresponding *glnB*-like genes in *Methanococcus maripaludis*, *Methanosarcina barkeri* and *Clostridium acetobutylicum*, and *glnB* from *Klebsiella pneumoniae*. The predicted secondary structural elements, the T-loop and the B-loop, are indicated above the sequence. The boxed areas show the tyrosine residue (Tyr51) that is the conserved site of uridylylation in bacteria and the corresponding amino acid residues of the *glnB*-like genes at position 51.

valently modified by uridylylation. However, the conserved tyrosine at position 49 in *M. mazei* NifI₁ and its homologs might be a target for modification, if the NifI proteins are modified at all. In addition to amino acid 49, amino acids in positions 3, 16 and 17, and positions 51 and 54 in the T-loop, are conserved within the NifI₁ and NifI₂ proteins, respectively (Figure 2). The alignment further indicates that the NifI₂ protein of *M. mazei* and its homologs contains additional amino acids in their C-terminal loop region, whereas only the B-loop of *C. acetobutylicum* NifI₁ contains three additional amino acids. Taken together, these *nifI* genes appear to represent a sepa-

rate *glnB*-like family in addition to the GlnB and GlnK homologs. Experimental data indicate that the *nifI* genes are not involved in the regulation of *nif* gene expression at the transcriptional level in *M. maripaludis* (Kessler et al. 1998). However, Leigh and coworkers have recently presented evidence that both *nifI* genes are required for posttranslational inhibition by ammonium of the *M. maripaludis* nitrogenase (“ammonium switch-off”) (Kessler and Leigh 1999, Kessler et al. 2001). The *nifI*₂ homologs of *M. mazei* and *M. barkeri* differ from all known *nifI*₂ homologs in that both deduced proteins contain additional amino acids in the C-terminal loop

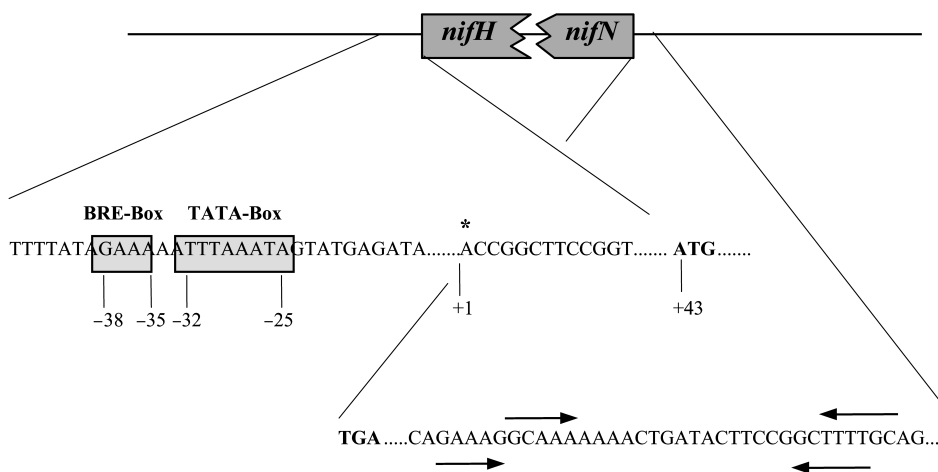


Figure 3. Diagram of the putative promoter region upstream of *nifH* and putative terminator region downstream of *nifN* in the *M. mazei* *nif* gene cluster. Abbreviations and symbols: * = transcriptional start site; TATA-box = archaeal TATA-box promoter element; BRE = factor B recognition element; stem loop structures are marked by arrows indicating the length and orientation of the stems. Sequences are numbered relative to the mRNA initiation site determined by the 5' RACE method.

region that are not found in PII-like proteins (Figure 2).

Transcriptional organization and regulation of the *nif* gene cluster in *M. mazei*

To analyze the promoter region, the *nif* transcriptional start site was determined by the 5'-RACE method from RNA extracted from cells grown under nitrogen-starvation conditions with molecular nitrogen as the sole nitrogen source. The transcriptional start site was localized 42 bp upstream of the putative translational start site of *nifH* (Figure 3). A potential archaeal consensus promoter sequence is centered 38 to 25 bp upstream from the 5' end of the transcriptional start site, and 81 to 68 bp from the translational start codon ATG of *nifH*. It contains a typical, archaeal factor-B-recognition element (BRE) [GAAA] and a potential TATA-box [TTTAAATA] (Figure 3). No similar promoter sequences were obtained at appropriate locations 5' of the other genes. Downstream of *nifN*, a potential transcriptional termination site was identified, containing two potential stem loops followed by a T-rich region (Figure 3). These findings indicate that the *nif* genes in *M. mazei* are organized in one operon that includes the two *nifI* genes.

Northern blot analysis was performed to provide further evidence of a *nif* gene cluster operon organization and to study the potential transcriptional regulation by nitrogen. The RNA was extracted from cells grown under nitrogen-starvation conditions, with molecular nitrogen as the sole nitrogen source, and under nitrogen-sufficient conditions in the presence of 10 mM ammonium. A single transcript was detected in mRNA isolated from cells grown under nitrogen-starvation conditions when an internal fragment derived from *nifH* was used as the hybridization probe (see Materials and methods). As shown in Figure 4A, the presence of the same single transcript in RNA isolated from cells grown under nitrogen-starvation conditions was observed using internal probes derived from *nifK* or *nifN*. The length of this single transcript was about 8 kb, which is in accordance with the expected length of a *nifHI₁I₂DKEN* transcript, and indicates that the seven genes are co-transcribed from a single promoter (Figure 5). However, when cells were

grown under nitrogen-sufficient conditions, no transcript was detected in the total RNA, suggesting that transcription is regulated by ammonium and only occurs during nitrogen starva-

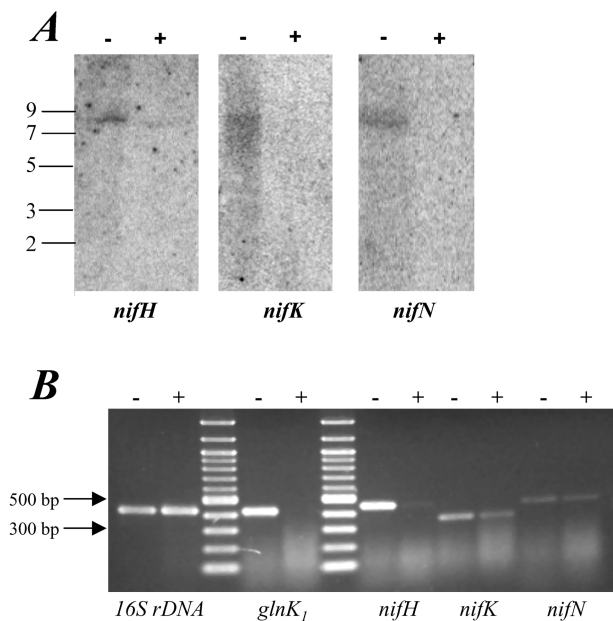


Figure 4. Transcriptional analysis of the *M. mazei* *nif* gene cluster. (A) Northern blot analysis of total RNA isolated from *M. mazei* cells grown under conditions of nitrogen limitation (N_2) and nitrogen sufficiency (NH_4^+) using probes for *nifH*, *nifK* and *nifN*. Each lane was loaded with 0.25 μ g total RNA from cells grown under nitrogen limitation (-) or nitrogen sufficiency (+); numbers on the left are molecular sizes in kilobases. (B) RT-PCR analysis. Reverse transcription was carried out on 0.1 μ g RNA isolated from cells grown under conditions of nitrogen limitation (-) or nitrogen sufficiency (+) using the OneStep RT-PCR Kit from Qiagen and primers as described in Materials and methods. Control PCR reactions with RNA in the absence of reverse transcriptase showed that the isolated RNA preparations were free of genomic DNA. As a control, a 16S rDNA-specific RT-PCR was carried out on 10 ng of RNA from cells from each growth condition. Products of the expected size (450 bp (*nifH*), 417 bp (*nifK*), 438 bp (*nifN*), 415 bp (*glnK₁*) and 420 bp (16S rDNA)) were separated in 1.5% agarose gels and visualized by ethidium bromide staining.

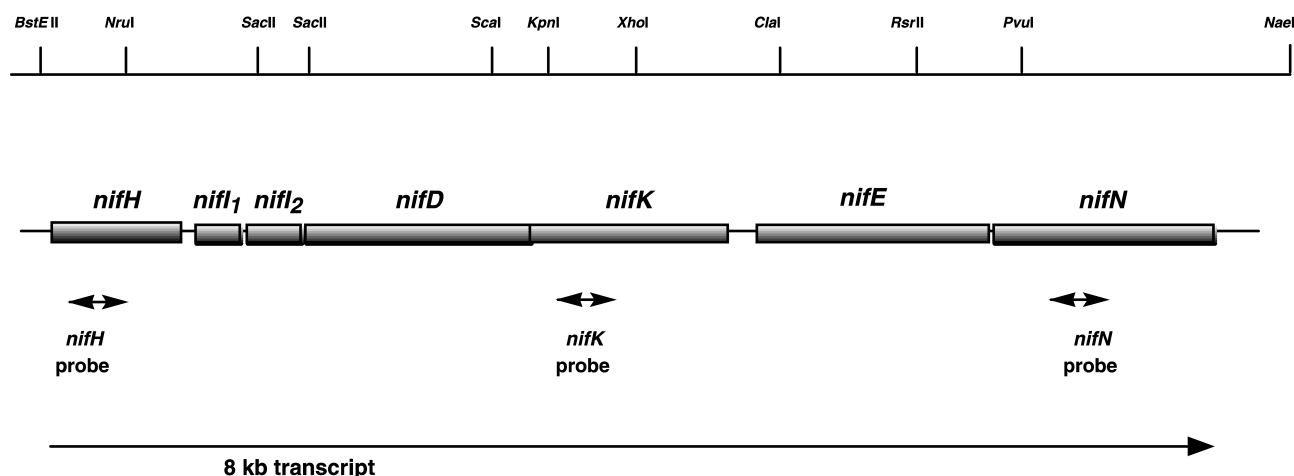


Figure 5. Organization of the *nif* gene cluster from *M. mazei* Gö1. The sizes of the boxes are proportional to the lengths of the genes. Probes used in Northern blot analysis, the single transcript observed, and the restriction sites are indicated.

tion (Figure 4A). Transcriptional regulation by nitrogen availability was further confirmed by RT-PCR (Figure 4B). Products of 415 and 450 bp, corresponding to the expected sizes of the products of the control gene *glnK₁* (known to be regulated by ammonium (Ehlers et al. 2002)) and the *nifH* gene, respectively, were amplified from RNA extracted from cells grown under nitrogen-limiting conditions, using the One-Step RT-PCR Kit and the *glnK₁* or *nifH* primers. Using the same amounts of RNA extracted from nitrogen-limited cells, the *nifK* (417 bp) and *nifN* (438 bp) products were significantly less amplified than the *nifH* product. Small amounts of the *nifH*, *nifK* and *nifN* products were obtained from RNA extracted from cells grown under nitrogen-sufficient conditions—equivalent to 1, 18 and 50% of the amount obtained from RNA extracted from nitrogen-limited cells, respectively (Figure 4B). The control RT-PCR with 16S rDNA-specific primers confirmed that equal amounts of RNA from nitrogen-deprived cells and nitrogen-sufficient cells were used. Thus, transcription of the *nif* operon was not completely repressed in response to nitrogen sufficiency and the transcript was rapidly degraded from the 3' end. The apparent degradation of the transcript also explains the difficulties in detecting the 8 kb transcript in the Northern blot analyses (Figure 4A).

The organization of the seven genes of the *nif* gene cluster in one operon in *M. mazei* is similar to the *nif* gene organization in *M. maripaludis*, but differs from the corresponding *nif2* gene cluster in *M. barkeri*, which appears to be organized in two transcriptional units (Chien and Zinder 1996, Kessler et al. 1998). The sequence at the transcriptional start site in front of the *nifH* gene in *M. mazei* shows a nearly palindromic sequence ACCGGCTTCCGGT (see Figure 3). For *M. maripaludis*, Leigh and coworkers identified a palindromic operator sequence located immediately 3' to the transcriptional start site for *nifH* (CGGAAAGAAGCTTCCG) (Cohen-Kupiec et al. 1997). Thus, the palindromic sequence in front of the *M. mazei nifH* gene may have a function in regulatory processes of *nif* gene transcription. If this is the case, the mechanism of transcriptional regulation of the *nif* cluster in *M. mazei*

may be more similar to the regulation in *M. maripaludis* and may differ from that in *M. barkeri*, which lacks the operator sequence (Chien and Zinder 1996).

Conclusion

We have identified a single ammonium-regulated *nif* gene cluster in the mesophilic methanogenic archaeon *M. mazei* strain Gö1 encoding a molybdenum-containing nitrogenase most closely related to the molybdenum nitrogenases of *M. acetivorans* and *M. barkeri* 227. However, no additional *nif* gene cluster encoding a potential alternative nitrogenase was observed in the complete *M. mazei* genome sequence. This is in contrast to the genome sequences of *M. acetivorans* and *M. barkeri*, which contain three and at least two sets of *nif* genes, respectively (Chien et al. 2000, Galagan et al. 2002; ERGO database (Integrated Genomics, Inc., <http://www.integratedgenomics.com>) and ORNL database (<http://genome.ornl.gov/microbial/mbar>)). We cannot rule out that *M. mazei* has lost the genes encoding the alternative nitrogenases. However, because *M. mazei* has a smaller genome than the two other organisms, the number of nitrogenases might correlate with the size of the genome.

Acknowledgments

We thank Anita Kuhn for her contributions during the initial steps of this work and Andrea Shauger for critical reading of the manuscript. This work was supported by a grant of the "Niedersächsisches Ministerium für Wissenschaft und Kultur" to the Göttingen Genomics Laboratory, and by grants of the DFG and by the Fonds der Chemischen Industrie.

References

- Arcondeguy, T., R. Jack and M. Merrick. 2001. The PII signal transduction proteins: pivotal players in microbial nitrogen control. *Microbiol. Mol. Biol. Rev.* 65:80–105.
- Bell, S.D. and S.P. Jackson. 2001. Mechanism and regulation of transcription in archaea. *Curr. Opin. Microbiol.* 4:208–213.

- Bult, C.J., O. White, G.J. Olsen et al. 1996. Complete genome sequence of the methanogenic archaeon, *Methanococcus jannaschii*. *Science* 273:1058–1073.
- Chen, J.S., J. Toth and M. Kasap. 2001. Genbank submission AF266462.
- Chien, Y.T. and S.H. Zinder. 1994. Cloning, DNA sequencing, and characterization of a *nifD*-homologous gene from the archaeon *Methanosarcina barkeri* 227 which resembles *nifD*₁ from the eubacterium *Clostridium pasteurianum*. *J. Bacteriol.* 176:6590–6598.
- Chien, Y.T. and S.H. Zinder. 1996. Cloning, functional organization, transcript studies, and phylogenetic analysis of the complete nitrogenase structural genes (*nifHDK*₂) and associated genes in the archaeon *Methanosarcina barkeri* 227. *J. Bacteriol.* 178:143–148.
- Chien, Y.T., J.D. Helmann and S.H. Zinder. 1998. Interactions between the promoter regions of nitrogenase structural genes (*nifHDK*₂) and DNA-binding proteins from N₂- and ammonium-grown cells of the archaeon *Methanosarcina barkeri* 227. *J. Bacteriol.* 180:2723–2728.
- Chien, Y.T., V. Auerbuch, A.D. Brabban and S.H. Zinder. 2000. Analysis of genes encoding an alternative nitrogenase in the archaeon *Methanosarcina barkeri* 227. *J. Bacteriol.* 182:3247–3253.
- Cohen-Kupiec, R., C. Blank and J.A. Leigh. 1997. Transcriptional regulation in Archaea: in vivo demonstration of a repressor binding site in a methanogen. *Proc. Natl. Acad. Sci.* 94:1316–1320.
- Dean, D.R. and M.R. Jacobson. 1992. Biochemical genetics of nitrogenases. *In* Biological Nitrogen Fixation. Eds. G. Stacey, R.H. Burris and H.J. Evans. Chapman & Hall, New York, pp 763–834.
- Dean, D.R., J.T. Bolin and L. Zheng. 1993. Nitrogenase metalloclusters: structures, organization, and synthesis. *J. Bacteriol.* 175:6737–6744.
- Deppenmeier, U., M. Blaut, A. Mahlmann and G. Gottschalk. 1990. Reduced coenzyme F₄₂₀ H₂-dependent heterodisulfide oxidoreductase: a proton translocating redox system in methanogenic bacteria. *Proc. Natl. Acad. Sci.* 87:9449–9453.
- Deppenmeier, U., A. Johann, T. Hartsch et al. 2002. The genome of *Methanosarcina mazei*: evidence for lateral gene transfer between Bacteria and Archaea. *J. Mol. Microbiol. Biotechnol.* 4:453–461.
- Devereux, J., P. Haerberli and O. Smithies. 1984. A comprehensive set of sequence analysis programs for the VAX. *Nucleic Acids Res.* 12:387–395.
- Ehlers, C., R. Grabbe, K. Veit and R.A. Schmitz. 2002. Characterization of GlnK₁ from *Methanosarcina mazei* strain Gö1: complementation of an *Escherichia coli* *glnK* mutant strain by *M. mazei* GlnK₁. *J. Bacteriol.* 184:1028–1040.
- Ferry, J.G. 1999. Enzymology of one-carbon metabolism in methanogenic pathways. *FEMS Microbiol. Rev.* 23:13–38.
- Fischer, H.M. 1994. Genetic regulation of nitrogen fixation in rhizobia. *Microbiol. Rev.* 58:352–386.
- Galagan, J.E., C. Nusbaum, A. Roy et al. 2002. The genome of *M. acetivorans* reveals extensive metabolic and physiological diversity. *Genome Res.* 12:532–542.
- Georgiadis, M.M., H. Komiya, P. Chakrabarti, D. Woo, J.J. Kornuc and D.C. Rees. 1992. Crystallographic structure of the nitrogenase iron protein from *Azotobacter vinelandii*. *Science* 257:1653–1659.
- Haselkorn, R. and W.J. Buikema. 1996. *Methanococcus* genome. *Science* 274:901–902.
- Hausner, W., J. Wettach, C. Hethke and M. Thomm. 1996. Two transcription factors related with the eucaryal transcription factors TATA-binding protein and transcription factor IIB direct promoter recognition by an archaeal RNA polymerase. *J. Biol. Chem.* 271:30,144–30,148.
- Kessler, P.S. and J.A. Leigh. 1999. Genetics of nitrogen regulation in *Methanococcus maripaludis*. *Genetics* 152:1343–1351.
- Kessler, P.S., J. McLarnan and J.A. Leigh. 1997. Nitrogenase phylogeny and the molybdenum dependence of nitrogen fixation in *Methanococcus maripaludis*. *J. Bacteriol.* 179:541–543.
- Kessler, P.S., C. Blank and J.A. Leigh. 1998. The *nif* gene operon of the methanogenic archaeon *Methanococcus maripaludis*. *J. Bacteriol.* 180:1504–1511.
- Kessler, P.S., K. Daniel and J.A. Leigh. 2001. Ammonium switch-off of nitrogen fixation in the methanogenic archaeon *Methanococcus maripaludis*: Mechanistic features and requirement for the novel GlnB homologues, NifI₁ and NifI₂. *J. Bacteriol.* 183:882–889.
- Langer, D. and W. Zillig. 1993. Putative *tflIs* gene of *Sulfolobus acidocaldarius* encoding an archaeal transcription elongation factor is situated directly downstream of the gene for a small subunit of DNA-dependent RNA polymerase. *Nucleic Acids Res.* 21: 2251.
- Langer, D., J. Hain, P. Thuriaux and W. Zillig. 1995. Transcription in Archaea: similarity to that in Eucarya. *Proc. Natl. Acad. Sci.* 92:5768–5772.
- Lobo, A.L. and S.H. Zinder. 1992. Nitrogen fixation by methanogenic bacteria. *In* Biological Nitrogen Fixation. Eds. G. Stacey, R.H. Burris and H.J. Evans. Chapman & Hall, New York, pp 191–211.
- Marsh, T.L., C.I. Reich, R.B. Whitelock and G.J. Olsen. 1994. Transcription factor IID in the Archaea: sequences in the *Thermococcus celer* genome would encode a product closely related to the TATA-binding protein of eukaryotes. *Proc. Natl. Acad. Sci.* 91:4180–4184.
- Merrick, M.J. and R.A. Edwards. 1995. Nitrogen control in bacteria. *Microbiol. Rev.* 59:604–622.
- Nölling, J., G. Breton, M.V. Omelchenko et al. 2001. Genome sequence and comparative analysis of the solvent-producing bacterium *Clostridium acetobutylicum*. *J. Bacteriol.* 183:4823–4838.
- Qureshi, S.A., B. Khoo, P. Baumann and S.P. Jackson. 1995. Molecular cloning of the transcription factor TFIIB homolog from *Sulfolobus shibatae*. *Proc. Natl. Acad. Sci.* 92:6077–6081.
- Rees, D.C. and J.B. Howard. 1999. Structural bioenergetics and energy transduction mechanisms. *J. Mol. Biol.* 293:343–350.
- Sambrook, J., E.F. Fritsch and T. Maniatis. 1989. Molecular cloning: a laboratory manual. 2nd Edn. Cold Spring Harbor Laboratory Press, Cold Spring Harbor, New York.
- Sibold, L., M. Henriquet, O. Possot and J.P. Aubert. 1991. Nucleotide sequence of *nifH* regions from *Methanobacterium ivanovii* and *Methanosarcina barkeri* 227 and characterization of *glnB*-like genes. *Res. Microbiol.* 142:5–12.
- Smith, D.R., L.A. Doucette-Stamm, C. Deloughery et al. 1997. Complete genome sequence of *Methanobacterium thermoautotrophicum* ΔH: functional analysis and comparative genomics. *J. Bacteriol.* 179:7135–7155.
- Souillard, N. and L. Sibold. 1989. Primary structure, functional organization and expression of nitrogenase structural genes of the thermophilic archaeobacterium *Methanococcus thermolithotrophicus*. *Mol. Microbiol.* 3:541–551.
- Staden, R., K.F. Beal and J.K. Bonfield. 2000. The Staden package. *Methods Mol. Biol.* 132:115–130.
- Thauer, R.K. 1998. Biochemistry of methanogenesis: a tribute to Marjory Stephenson. 1998 Marjory Stephenson Prize Lecture. *Microbiology* 144:2377–2406.
- Thomm, M. 2000. Die Transkriptionsmaschinerie der Archaea. *Biospektrum* 3:179–185.
- Young, J.P.W. 1992. Phylogenetic classification of nitrogen fixing organisms. *In* Biological Nitrogen Fixation. Eds. G. Stacey, R.H. Burris and H.J. Evans. Chapman & Hall, New York, pp 736–762.



Hindawi

Submit your manuscripts at
<http://www.hindawi.com>

